

## Recombinant Human C12orf40 Protein, GST-tagged

**Cat. No.** C12orf40-502H    **Lot. No.** (See product label)

### SPECIFICATION

<b>Product Overview</b>	Human C12orf40 full-length ORF ( AAH38754.2, 1 a.a. - 422 a.a.) recombinant protein with GST-tag at N-terminal.
<b>Species</b>	Human
<b>Source</b>	Wheat Germ
<b>Form</b>	50 mM Tris-HCl, 10 mM reduced Glutathione, pH=8.0 in the elution buffer.
<b>Molecular Mass</b>	74.9 kDa
<b>AA Sequence</b>	MVNVISCKKKIPETVRKPTHVNMNRDIKMPLRKHNLELTMSPHCVPSKLCLDDTETN VNCQRLSSKEDLGPVQSQGMDSYSMLHPQFSKIENCSFTPSSFSVELPSNRHISKL NFTSGIAPTPQKLAYEKKQNDQRSTVNCSDSLLSKLNKSQDVFSPSHKTTFRGTLFE RLNSLGNRNLLTKSPAVIMDEDCRSTDEIRQSDYITEKHSIQHIWGKNGKEVSNFLED VNQSTPNLLSENCDSFVSQNMIVLNIDEQRIKKT FNKCDYDSMGDTCVVTSSDKNH VTDR CIRNIFTVPELTFNSN STLNKTSYPEK CQPNKKYQREYNKNERNDLSTSFENDY YPSSSERKEKFENDYQE KTPQKSIQKYPANSMGNIPSEELHSKQSWDFGLDEILME EGGIYSLKSKRISTKKICQYNCIS
<b>Storage</b>	Store at -80 centigrade. Aliquot to avoid repeated freezing and thawing.
<b>Storage Buffer</b>	50 mM Tris-HCl, 10 mM reduced Glutathione, pH=8.0 in the elution buffer.

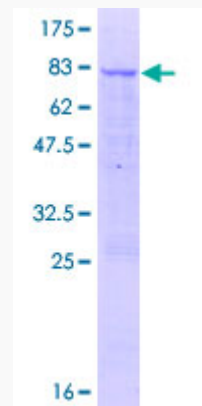
### GENE INFORMATION

 Tel: 1-631-559-9269    1-516-512-3133

 Email: [info@creative-biomart.com](mailto:info@creative-biomart.com)     Fax: 1-631-938-8127

 45-1 Ramsey Road, Shirley, NY 11967, USA

<b>Gene Name</b>	C12orf40 chromosome 12 open reading frame 40 [ Homo sapiens ]
<b>Official Symbol</b>	C12orf40
<b>Synonyms</b>	C12ORF40; chromosome 12 open reading frame 40; uncharacterized protein C12orf40; FLJ40126;
<b>Gene ID</b>	283461
<b>mRNA Refseq</b>	NM_001031748
<b>Protein Refseq</b>	NP_001026918
<b>UniProt ID</b>	Q86WS4



 Tel: 1-631-559-9269 1-516-512-3133

 Email: [info@creative-biomart.com](mailto:info@creative-biomart.com)  Fax: 1-631-938-8127

 45-1 Ramsey Road, Shirley, NY 11967, USA