

Recombinant Human C12orf5 Protein, GST-tagged

Cat. No. C12orf5-509H Lot. No. (See product label)

SPECIFICATION

Product Overview	Human C12orf5 full-length ORF (NP_065108.1, 1 a.a. - 270 a.a.) recombinant protein with GST-tag at N-terminal.
Species	Human
Source	Wheat Germ
Description	This gene is regulated as part of the p53 tumor suppressor pathway and encodes a protein with sequence similarity to the bisphosphate domain of the glycolytic enzyme that degrades fructose-2,6-bisphosphate. The protein functions by blocking glycolysis and directing the pathway into the pentose phosphate shunt. Expression of this protein also protects cells from DNA damaging reactive oxygen species and provides some protection from DNA damage-induced apoptosis. The 12p13.32 region that includes this gene is paralogous to the 11q13.3 region.
Form	50 mM Tris-HCl, 10 mM reduced Glutathione, pH=8.0 in the elution buffer.
Molecular Mass	56.5 kDa
AA Sequence	MARFALTVVRHGETRFNKEKIIQGGQGVDEPLSETGFKQAAAAGIFLNNVKFTHAFSS DLMRTKQTMHGILERSKFCCKDMTVKYDSRLRERKYGVVEGKALSELRAMAKAAREE CPVFTPPGGETLDQVKMRGIDFFEFLLCQLILKEADQKEQFSQGSPSNCLETSLAEIFP LGKNHSSKVNSDSGIPGLAASVLVSHGAYMRSFLFDYFLTDLKCSLPATLSRSELMS VTPNTGMSLFIINFEEGREVKPTVQCICMNLQDHLNGLTETR

 Tel: 1-631-559-9269 1-516-512-3133

 Email: info@creative-biomart.com  Fax: 1-631-938-8127

 45-1 Ramsey Road, Shirley, NY 11967, USA

Storage Store at -80 centigrade. Aliquot to avoid repeated freezing and thawing.

Storage Buffer 50 mM Tris-HCl, 10 mM reduced Glutathione, pH=8.0 in the elution buffer.

GENE INFORMATION

Gene Name [C12orf5 chromosome 12 open reading frame 5 \[Homo sapiens \]](#)

Official Symbol [C12orf5](#)

Synonyms C12ORF5; chromosome 12 open reading frame 5; probable fructose-2,6-bisphosphatase TIGAR; TIGAR; TP53 induced glycolysis and apoptosis regulator; transactivated by NS3TP2 protein; TP53-induced glycolysis and apoptosis regulator;

Gene ID [57103](#)

mRNA Refseq [NM_020375](#)

Protein Refseq [NP_065108](#)

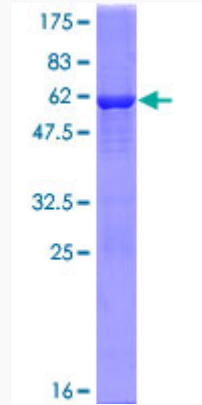
MIM [610775](#)

UniProt ID [Q9NQ88](#)

 Tel: 1-631-559-9269 1-516-512-3133

 Email: info@creative-biomart.com  Fax: 1-631-938-8127

 45-1 Ramsey Road, Shirley, NY 11967, USA



 Tel: 1-631-559-9269 1-516-512-3133

 Email: info@creative-biomart.com  Fax: 1-631-938-8127

 45-1 Ramsey Road, Shirley, NY 11967, USA