

Recombinant Human C16orf89 Protein, Myc/DDK-tagged, C13 and N15-labeled

Cat. No. C16orf89-1577H **Lot. No.** (See product label)

SPECIFICATION

Product Overview

C16orf89 MS Standard C13 and N15-labeled recombinant protein (NP_689672) with a C-terminal MYC/DDK tag, was expressed in HEK293 cells.

Species

Human

Source

HEK293

Description

This gene is expressed predominantly in the thyroid. Based on expression patterns similar to thyroid transcription factors and proteins, this gene may function in the development and function of the thyroid. Multiple transcript variants encoding different isoforms have been found for this gene.

Molecular Mass

49.2 kDa

AA Sequence

MASLGLLLLLLLLTALPPLWSSSLPGLDTAESKATIADLILSALERATVFLEQRLPEINLD
 GMVGVRVLEEQLKSVREKWAQEPLLQPLSLRVGMLGEKLEAAIQRSLHYLKLSDPK
 YLREFQLTLQPGFWKLPHAWIHTDASLVYPTFGPQDSFSEERSDVCLVQLLGTGTD
 SSEPCGLSDLCRSLMTKPGCSGYCLSHQLLFFLWARMRGCTQGPLQQSQDYINLF
 CANMMDLNRRAEAIGYAYPTRDIFMENIMFCGMGGFSDFYKLRWLEAILSQKQKE
 GCFGEPAEDEELSKAIQYQQHFSRRVKRREKQFPDSRSVAQAGVQWRNLGSLQP
 LPPGFKQFSCILPSSWDYRSVPPYLANFYIFLVETGFHHVAHAGLELLISRPPTSG
 SQSVGLTRTRPLEQKLISEEDLAANDILDYKDDDDKV

Purity

> 80% as determined by SDS-PAGE and Coomassie blue staining

 Tel: 1-631-559-9269 1-516-512-3133

 Email: info@creative-biomart.com  Fax: 1-631-938-8127

 45-1 Ramsey Road, Shirley, NY 11967, USA

Stability	Stable for 3 months from receipt of products under proper storage and handling conditions.
Storage	Store at -80 centigrade. Avoid repeated freeze-thaw cycles.
Concentration	50 µg/mL as determined by BCA
Storage Buffer	100 mM glycine, 25 mM Tris-HCl, pH 7.3.

GENE INFORMATION

Gene Name	C16orf89 chromosome 16 open reading frame 89 [Homo sapiens (human)]
Official Symbol	C16orf89
Synonyms	C16orf89; chromosome 16 open reading frame 89; UPF0764 protein C16orf89
Gene ID	146556
mRNA Refseq	NM_152459
Protein Refseq	NP_689672
UniProt ID	Q6UX73

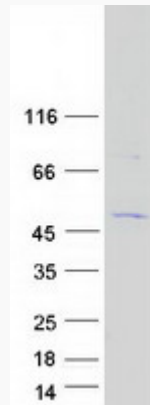
 Tel: 1-631-559-9269 1-516-512-3133

 Email: info@creative-biomart.com  Fax: 1-631-938-8127

 45-1 Ramsey Road, Shirley, NY 11967, USA



SDS-PAGE



Tel: 1-631-559-9269 1-516-512-3133

Email: info@creative-biomart.com Fax: 1-631-938-8127

45-1 Ramsey Road, Shirley, NY 11967, USA