

Recombinant Human C17orf75 Protein, His-tagged

Cat. No. C17orf75-332H Lot. No. (See product label)

SPECIFICATION

Product Overview	Recombinant Human C17orf75 Protein (Met1-Phe396) with N-His tag was expressed in E. coli.
Species	Human
Source	E.coli
ProteinLength	Met1-Phe396
Description	Involved in intracellular protein transport and vesicle tethering to Golgi. Located in cytoplasmic vesicle and trans-Golgi network.
Form	Freeze-dried powder
Molecular Mass	Predicted Molecular Mass: 48.3 kDa Accurate Molecular Mass: 50 kDa
Purity	> 90%
Applications	Positive Control; Immunogen; SDS-PAGE; WB.
Stability	The thermal stability is described by the loss rate. The loss rate was determined by accelerated thermal degradation test, that is, incubate the protein at 37 centigrade for 48h, and no obvious degradation and precipitation were observed. The loss rate is less than 5% within the expiration date under appropriate storage condition.

 Tel: 1-631-559-9269 1-516-512-3133

 Email: info@creative-biomart.com  Fax: 1-631-938-8127

 45-1 Ramsey Road, Shirley, NY 11967, USA

Storage	Avoid repeated freeze/thaw cycles. Store at 2-8 centigrade for one month. Aliquot and store at -80 centigrade for 12 months.
----------------	--

Storage Buffer	20mM Tris, 150mM NaCl, pH8.0, containing 1mM EDTA, 1mM DTT, 0.01% SKL, 5% Trehalose and Proclin300.
-----------------------	---

Reconstitution	Reconstitute in sterile water to a concentration of 0.1-1.0 mg/mL. Do not vortex.
-----------------------	---

GENE INFORMATION

Gene Name	C17orf75 chromosome 17 open reading frame 75 [Homo sapiens (human)]
------------------	---

Official Symbol	C17orf75
------------------------	----------

Synonyms	C17ORF75; chromosome 17 open reading frame 75; protein Njmu-R1; NJMU R1; spermatogenesis-related protein; NJMU-R1
-----------------	---

Gene ID	64149
----------------	-------

mRNA Refseq	NM_022344
--------------------	-----------

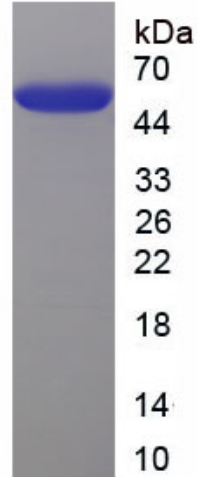
Protein Refseq	NP_071739
-----------------------	-----------

UniProt ID	Q9HAS0
-------------------	--------

 Tel: 1-631-559-9269 1-516-512-3133

 Email: info@creative-biomart.com  Fax: 1-631-938-8127

 45-1 Ramsey Road, Shirley, NY 11967, USA



Tel: 1-631-559-9269 1-516-512-3133

Email: info@creative-biomart.com Fax: 1-631-938-8127

45-1 Ramsey Road, Shirley, NY 11967, USA