

Recombinant Human C17orf75 Protein, Myc/DDK-tagged, C13 and N15-labeled

Cat. No. C17orf75-4236H **Lot. No.** (See product label)

SPECIFICATION

Product Overview	C17orf75 MS Standard C13 and N15-labeled recombinant protein (NP_071739) with a C-terminal MYC/DDK tag, was expressed in HEK293 cells.
Species	Human
Source	HEK293
Description	May have a role in spermatogenesis.
Molecular Mass	44.6 kDa
AA Sequence	MLPSLQESMDGDEKELESSEEGGSAEERRLEPPSSSHYCLYSYRGSRLAQQRGDS EDGSPSGTNAETPSGDDFSLSLADTNLPSEVEPELRSFIAKRLSRGAVFEGLGNVAS VELKIPGYRVGCYYCLFQNEKLLPETVTIDSERNPSEYVVCFLGGSEKGLELFRLELD KYIQGLKNNMNCEARGLESHIKSYLSSWFEDVVCPIQRVLLFQEKLTFLLHAALSYT PVEVKESDEKTKRDINRFLSVASLQGLIHEGTMTSLCMAMTEEQHKSVIDCSSSQP QFCNAGSNRFCEdWMQAFLNGAKGGNPFLFRQVLENFKLKAIQDTNNLKRFIRQAE MNHYALFKCYMFLKNCGSGDILLKIVKVEHEEMPEAKNVIIVLEEFMKEALDQSFTTR TRPLEQKLISEEDLAANDILDYKDDDDKV
Purity	> 80% as determined by SDS-PAGE and Coomassie blue staining
Stability	Stable for 3 months from receipt of products under proper storage and handling conditions.

 Tel: 1-631-559-9269 1-516-512-3133

 Email: info@creative-biomart.com  Fax: 1-631-938-8127

 45-1 Ramsey Road, Shirley, NY 11967, USA

Storage	Store at -80 centigrade. Avoid repeated freeze-thaw cycles.
----------------	---

Concentration	50 µg/mL as determined by BCA
----------------------	-------------------------------

Storage Buffer	100 mM glycine, 25 mM Tris-HCl, pH 7.3.
-----------------------	---

GENE INFORMATION

Gene Name	C17orf75 chromosome 17 open reading frame 75 [Homo sapiens (human)]
------------------	---

Official Symbol	C17orf75
------------------------	----------

Synonyms	C17ORF75; chromosome 17 open reading frame 75; protein Njmu-R1; NJMU R1; spermatogenesis-related protein; NJMU-R1;
-----------------	--

Gene ID	64149
----------------	-------

mRNA Refseq	NM_022344
--------------------	-----------

Protein Refseq	NP_071739
-----------------------	-----------

UniProt ID	Q9HAS0
-------------------	--------

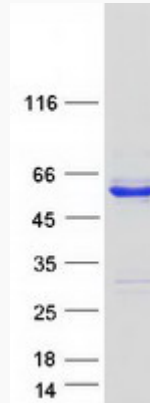
 Tel: 1-631-559-9269 1-516-512-3133

 Email: info@creative-biomart.com  Fax: 1-631-938-8127

 45-1 Ramsey Road, Shirley, NY 11967, USA



SDS-PAGE



Tel: 1-631-559-9269 1-516-512-3133

Email: info@creative-biomart.com Fax: 1-631-938-8127

45-1 Ramsey Road, Shirley, NY 11967, USA