

Recombinant Human C17orf75 Protein, GST-tagged

Cat. No. C17orf75-5882H **Lot. No.** (See product label)

SPECIFICATION

Product Overview	Human NJMU-R1 full-length ORF (AAH54035, 1 a.a. - 396 a.a.) recombinant protein with GST-tag at N-terminal.
Species	Human
Source	Wheat Germ
ProteinLength	1-396 a.a.
Description	C17orf75 (Chromosome 17 Open Reading Frame 75) is a Protein Coding gene.
Molecular Mass	69.3 kDa
AA Sequence	<p>MLPSLQESMDGDEKELESSEEGGSAEERRLEPPSSSHYCLYSYRGSRLAQQRGDS EDGSPSGTNAETPSGDDFSLSLADTNLPSEVEPELRSFIAKRLSRGAVFEGLGNVAS VELKIPGYRVGCYYCLFQNEKLLPETVTIDSERNPSEYVVCFLGGSEKGLELFRLELD KYIQGLKNNMNCEARGLESHIKSYLSSWFEDVVCPIQRVLLLFQEKLTFLLHAALSYT PVEVKESDEKTKRDINRFLSVASLQGLIHEGTMTSLCMAMTEEQHKSVVIDCSSSQP QFCNAGSNRFCEWDMQAFNLGAKGGNPFLFRQVLENFKLKAIQDTNNLKRFIRQAE MNHYALFKCYMFLKNCGSGDILLKIVKVEHEEMPEAKNVIADVLEEFMKEALDQSF</p>
Applications	<p>Enzyme-linked Immunoabsorbent Assay Western Blot (Recombinant protein) Antibody Production Protein Array</p>

 Tel: 1-631-559-9269 1-516-512-3133

 Email: info@creative-biomart.com  Fax: 1-631-938-8127

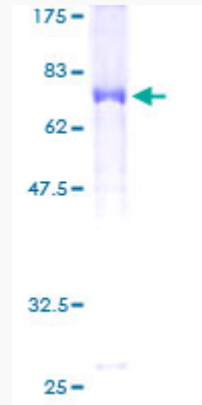
 45-1 Ramsey Road, Shirley, NY 11967, USA

Notes	Best use within three months from the date of receipt of this protein.
Storage	Store at -80 centigrade. Aliquot to avoid repeated freezing and thawing.
Storage Buffer	50 mM Tris-HCl, 10 mM reduced Glutathione, pH=8.0 in the elution buffer.
GENE INFORMATION	
Gene Name	C17orf75 chromosome 17 open reading frame 75 [Homo sapiens]
Official Symbol	C17orf75
Synonyms	C17ORF75; chromosome 17 open reading frame 75; protein Njmu-R1; NJMU R1; spermatogenesis-related protein; NJMU-R1;
Gene ID	64149
mRNA Refseq	NM_022344
Protein Refseq	NP_071739
UniProt ID	Q9HAS0

 Tel: 1-631-559-9269 1-516-512-3133

 Email: info@creative-biomart.com  Fax: 1-631-938-8127

 45-1 Ramsey Road, Shirley, NY 11967, USA



Quality Control

Testing:

12.5% SDS-PAGE Stained with Coomassie Blue.

 Tel: 1-631-559-9269 1-516-512-3133

 Email: info@creative-biomart.com  Fax: 1-631-938-8127

 45-1 Ramsey Road, Shirley, NY 11967, USA