

Active Recombinant Human C1QA protein, His-tagged

Cat. No. C1QA-0112H Lot. No. (See product label)

SPECIFICATION

| | |
|-------------------------|--|
| Product Overview | Active Recombinant Human C1QA protein(P02745)(28-245 aa), fused with N-terminal His tag, was expressed in E.coli. |
| Species | Human |
| Source | E.coli |
| ProteinLength | 28-245 aa |
| Form | 20mM Tris, 150mM NaCl, pH8.0, containing 1mM EDTA, 1mM DTT, 0.01% SKL, 5% Trehalose and Proclin300. |
| Bio-activity | Complement Component 1, Q Subcomponent A (C1qA) is a subunit of the C1q complex in the complement system. It has a crucial role in recognizing pathogens and immune complexes. Structurally, it contributes to the overall architecture of C1q, enabling it to interact with various ligands. Functionally, it is essential for initiating the classical complement pathway. Binding of C1qA to C1r activates C1r, triggering the classical complement cascade for pathogen elimination and immune response regulation. Thus a functional ELISA assay was conducted to detect the interaction of recombinant human C1qA and recombinant mouse C1r. Briefly, C1qA was diluted serially in PBS with 0.01% BSA (pH 7.4). Duplicate samples of 100 µl were then transferred to C1r-coated microtiter wells and incubated for 1h at 37°C. Wells were washed with PBST and incubated for 1h with anti-C1qA pAb, then aspirated and washed 3 times. After incubation with HRP labelled secondary antibody for 1h at |

 Tel: 1-631-559-9269 1-516-512-3133

 Email: info@creative-biomart.com  Fax: 1-631-938-8127

 45-1 Ramsey Road, Shirley, NY 11967, USA

37°C, wells were aspirated and washed 5 times. With the addition of substrate solution, wells were incubated 15-25 minutes at 37°C. Finally, add 50 μ stop solution to the wells and read at 450/630nm immediately. The binding activity of recombinant human C1qA and recombinant mouse C1r was shown, the EC50 for this effect is 0.022ug/mL.

Molecular Mass 26.8kDa

Endotoxin <1.0EU per 1μg (determined by the LAL method).

Purity > 95%

Storage Avoid repeated freeze/thaw cycles. Store at 2-8°C for one month. Store at -20°C for 12 months. Aliquot and store at -80°C for 12 months.

Reconstitution Reconstitute in 10mM PBS (pH7.4) to a concentration of 0.1-1.0 mg/mL. Do not vortex.

GENE INFORMATION

Gene Name C1QA complement component 1, q subcomponent, A chain [Homo sapiens]

Official Symbol C1QA

Synonyms C1QA; complement component 1, q subcomponent, A chain; complement component 1, q subcomponent, alpha polypeptide; complement C1q subcomponent subunit A; complement component C1q, A chain;

Gene ID 712

mRNA Refseq NM_015991

 Tel: 1-631-559-9269 1-516-512-3133

 Email: info@creative-biomart.com  Fax: 1-631-938-8127

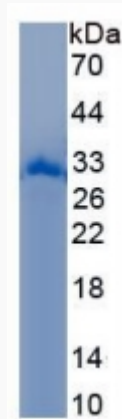
 45-1 Ramsey Road, Shirley, NY 11967, USA

Protein Refseq NP_057075

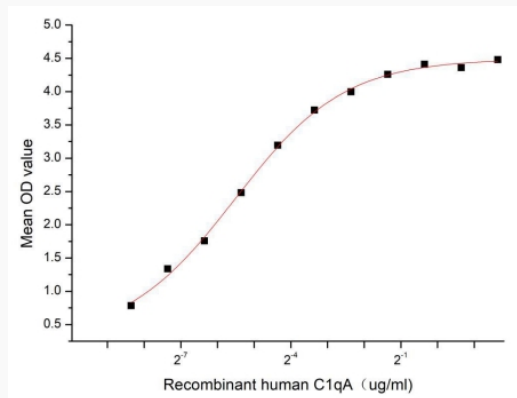
MIM 120550

UniProt ID P02745

SDS-PAGE



Activity



 Tel: 1-631-559-9269 1-516-512-3133

 Email: info@creative-biomart.com  Fax: 1-631-938-8127

 45-1 Ramsey Road, Shirley, NY 11967, USA