

Recombinant Mouse C1QA Protein (23-245 aa), His-tagged

Cat. No. C1QA-1345M Lot. No. (See product label)

SPECIFICATION

Product Overview	Recombinant Mouse C1QA Protein (23-245 aa) is produced by Yeast expression system. This protein is fused with a 6xHis tag at the N-terminal. Protein Description: Full Length of Mature Protein.
Species	Mouse
Source	Yeast
ProteinLength	23-245 aa
Description	C1q associates with the proenzymes C1r and C1s to yield C1, the first component of the serum complement system. The collagen-like regions of C1q interact with the Ca ²⁺ -dependent C1r2C1s2 proenzyme complex, and efficient activation of C1 takes place on interaction of the globular heads of C1q with the Fc regions of IgG or IgM antibody present in immune complexes.
Form	Tris-based buffer, 50% glycerol
Molecular Mass	25.6 kDa
AA Sequence	EDVCRAPNGKDGAPGNPGRPGRPGLKGERGEPGAAGIRTGIRGFKGDPGESGPP GKPGNVGLPGSPGLGDSGPQGLKGVKGNPGRNIRDQPRPAFSAIRQNPMTLGNVVI FDKVLTNQESPYQNHTGRFICAVPGFYFNFQVISKWDLCLFIKSSSGGQPRDSLFS SNTNNKGLFQVLGGTVLQLRRGDEVWIEKDPKGRYIYQTEADSIFSGFLIFPSA

 Tel: 1-631-559-9269 1-516-512-3133

 Email: info@creative-biomart.com  Fax: 1-631-938-8127

 45-1 Ramsey Road, Shirley, NY 11967, USA

Purity	> 90% as determined by SDS-PAGE.
Notes	Repeated freezing and thawing is not recommended. Store working aliquots at 4 centigrade for up to one week.
Storage	The shelf life is related to many factors, storage state, buffer ingredients, storage temperature and the stability of the protein itself. Generally, the shelf life of liquid form is 6 months at -20 centigrade/-80 centigrade. The shelf life of lyophilized form is 12 months at -20 centigrade/-80 centigrade.
Concentration	A hardcopy of COA with reconstitution instruction is sent along with the products. Please refer to it for detailed information.

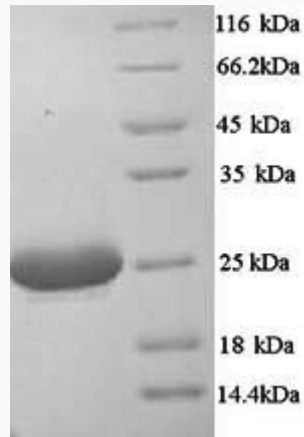
GENE INFORMATION

Gene Name	C1qa complement component 1, q subcomponent, alpha polypeptide [<i>Mus musculus</i>]
Official Symbol	C1QA
Synonyms	C1QA; C1q; AI255395;
Gene ID	12259
mRNA Refseq	NM_007572
Protein Refseq	NP_031598
UniProt ID	P98086

 Tel: 1-631-559-9269 1-516-512-3133

 Email: info@creative-biomart.com  Fax: 1-631-938-8127

 45-1 Ramsey Road, Shirley, NY 11967, USA



(Tris-Glycine gel) Discontinuous SDS-PAGE (reduced) with 5% enrichment gel and 15% separation gel.

 Tel: 1-631-559-9269 1-516-512-3133

 Email: info@creative-biomart.com  Fax: 1-631-938-8127

 45-1 Ramsey Road, Shirley, NY 11967, USA