

## Recombinant Human C1QA protein(23-245 aa), C-His-tagged

Cat. No. C1QA-2528H Lot. No. (See product label)

### SPECIFICATION

<b>Product Overview</b>	Recombinant Human C1QA protein(P02745)(23-245 aa), fused with C-terminal His tag, was expressed in E. coli.
<b>Species</b>	Human
<b>Source</b>	E.coli
<b>ProteinLength</b>	23-245 aa
<b>Form</b>	0.15 M Phosphate buffered saline
<b>Molecular Mass</b>	25 kDa
<b>Storage</b>	Shipped on dry ice. Avoid repeated freeze-thaw cycles. Upon receipt, 2 days when stored at 2 to 8 °C after thawing. Up to 12 months when aliquoted and stored at -20 to -80°C.
<b>Reconstitution</b>	It is recommended that sterile water be added to the vial to prepare a stock solution of 0.2 ug/ul. Centrifuge the vial at 4°C before opening to recover the entire contents.
<b>AA Sequence</b>	EDLCRAPDGKKGEAGRPGRRGRPGLKGEQGEPGAPGIRTGIQGLKGDQGEPPGS GNPGKVGYPGPSGPLGARGIPGIKGTGKSPGNIKDQPRPAFSAIRRNPPMGGNVVIF DTVITNQEEPYQNHSGRFVCTVPGYYYFTFQVLSQWEICLSIVSSSRGQVRRSLGFC DTTNKGLFQVVS GGMVLQLQQGDQVWVEKDPKKGHIYQGSEADSVFSGFLIFPSA

Tel: 1-631-559-9269 1-516-512-3133

Email: [info@creative-biomart.com](mailto:info@creative-biomart.com) Fax: 1-631-938-8127

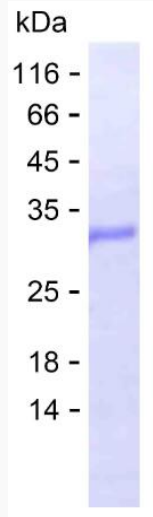
45-1 Ramsey Road, Shirley, NY 11967, USA

**GENE INFORMATION**

<b>Gene Name</b>	C1QA complement component 1, q subcomponent, A chain [ Homo sapiens ]
<b>Official Symbol</b>	C1QA
<b>Synonyms</b>	C1QA; complement component 1, q subcomponent, A chain; complement component 1, q subcomponent, alpha polypeptide; complement C1q subcomponent subunit A; complement component C1q, A chain;
<b>Gene ID</b>	712
<b>mRNA Refseq</b>	NM_015991
<b>Protein Refseq</b>	NP_057075
<b>MIM</b>	120550
<b>UniProt ID</b>	P02745

 Tel: 1-631-559-9269 1-516-512-3133 Email: [info@creative-biomart.com](mailto:info@creative-biomart.com)  Fax: 1-631-938-8127 45-1 Ramsey Road, Shirley, NY 11967, USA

**SDS-PAGE**



 Tel: 1-631-559-9269 1-516-512-3133

 Email: [info@creative-biomart.com](mailto:info@creative-biomart.com)  Fax: 1-631-938-8127

 45-1 Ramsey Road, Shirley, NY 11967, USA