

Recombinant Full Length Human C1QB Protein, C-Flag-tagged

Cat. No. C1QB-2136HFL **Lot. No.** (See product label)

SPECIFICATION

Product Overview	Recombinant Full Length Human C1QB Protein, fused to Flag-tag at C-terminus, was expressed in Mammalian cells.
Species	Human
Source	Mammalian Cells
Description	This gene encodes the B-chain polypeptide of serum complement subcomponent C1q, which associates with C1r and C1s to yield the first component of the serum complement system. C1q is composed of 18 polypeptide chains which include 6 A-chains, 6 B-chains, and 6 C-chains. Each chain contains an N-terminal collagen-like region and a C-terminal C1q globular domain. C1q deficiency is associated with lupus erythematosus and glomerulonephritis.
Form	25 mM Tris HCl, pH 7.3, 100 mM glycine, 10% glycerol.
Molecular Mass	26.5 kDa
AA Sequence	<pre> MMMKIPWGSIPVLMLLLLLGLIDISQAQLSCTGPPAIPGIPGIPGTPGPDGQPPTPGIK GEKGLPGLAGD HGEFGKEKGDGPNGKVGPKGPMGPKGGPGAPGAPGPKGE SGDYKATQKIAFSATRTINVPLRRDQTI RFDHVITNMNNNYEPRSGKFTCKVPLGLYY FTYHASSRGNLCVNLMRGRERAQKVVTFCDYAYNTFQVTTG GMVLKLEQGENVFL QATDKNSLLGMEGANSIFSGFLLFPDMEA TRTRPLEQKLISEEDLAANDILDYKDDD DKV </pre>

 Tel: 1-631-559-9269 1-516-512-3133

 Email: info@creative-biomart.com  Fax: 1-631-938-8127

 45-1 Ramsey Road, Shirley, NY 11967, USA

Purity	> 80% as determined by SDS-PAGE and Coomassie blue staining.
Stability	Stable for 12 months from the date of receipt of the product under proper storage and handling conditions. Avoid repeated freeze-thaw cycles.
Storage	Store at -80 centigrade.
Concentration	>50 ug/mL as determined by microplate BCA method.
Preparation	Recombinant protein was captured through anti-DDK affinity column followed by conventional chromatography steps.
Protein Families	Secreted Protein
Protein Pathways	Complement and coagulation cascades, Prion diseases, Systemic lupus erythematosus
Full Length	Full L.

GENE INFORMATION

Gene Name	C1QB complement C1q B chain [Homo sapiens (human)]
Official Symbol	C1QB
Synonyms	complement component 1, q subcomponent, B chain; complement component 1, q subcomponent, beta polypeptide; complement component C1q, B chain; complement subcomponent C1q chain B; OTTHUMP00000002940
Gene ID	713

 Tel: 1-631-559-9269 1-516-512-3133

 Email: info@creative-biomart.com  Fax: 1-631-938-8127

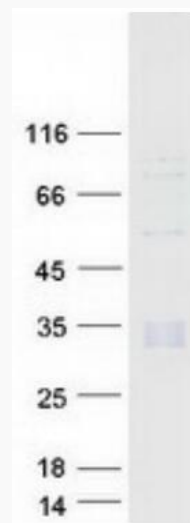
 45-1 Ramsey Road, Shirley, NY 11967, USA

mRNA Refseq [NM_000491.5](#)

Protein Refseq [NP_000482.3](#)

MIM [120570](#)

UniProt ID [P02746](#)



Coomassie blue staining of purified C1QB protein.

 Tel: 1-631-559-9269 1-516-512-3133

 Email: info@creative-biomart.com  Fax: 1-631-938-8127

 45-1 Ramsey Road, Shirley, NY 11967, USA