

Recombinant Human C1QB Protein, Myc/DDK-tagged, C13 and N15-labeled

Cat. No. C1QB-4752H **Lot. No.** (See product label)

SPECIFICATION

Product Overview	C1QB MS Standard C13 and N15-labeled recombinant protein (NP_000482) with a C-terminal MYC/DDK tag, was expressed in HEK293 cells.
Species	Human
Source	HEK293
Description	This gene encodes the B-chain polypeptide of serum complement subcomponent C1q, which associates with C1r and C1s to yield the first component of the serum complement system. C1q is composed of 18 polypeptide chains which include 6 A-chains, 6 B-chains, and 6 C-chains. Each chain contains an N-terminal collagen-like region and a C-terminal C1q globular domain. C1q deficiency is associated with lupus erythematosus and glomerulonephritis.
Molecular Mass	26.7 kDa
AA Sequence	MMMKIPWGSIPVLMLLLLLGLIDISQAQLSCTGPPAIPGIPGIPGTPGPDGQPPTGPIK GEKGLPGLAGDHGEFGEKGDGPGIPGNPGKVGPKGPMGPKGGPGAPGAPGPKGES GDYKATQKIAFSATRTINVPLRRDQTIKFDHVITNMNNNYEPRSGKFTCKVPLYFT YHASSRGNLCVNLMRGRERAQKVVTFCDYAYNTFQVTTGGMVLKLEQGENVFLQA TDKNLLGMEGANSIFSGFLLFPDMEATRTRPLEQKLISEEDLAANDILDYKDDDDKV
Purity	> 80% as determined by SDS-PAGE and Coomassie blue staining

 Tel: 1-631-559-9269 1-516-512-3133

 Email: info@creative-biomart.com  Fax: 1-631-938-8127

 45-1 Ramsey Road, Shirley, NY 11967, USA

Stability	Stable for 3 months from receipt of products under proper storage and handling conditions.
Storage	Store at -80 centigrade. Avoid repeated freeze-thaw cycles.
Concentration	50 µg/mL as determined by BCA
Storage Buffer	100 mM glycine, 25 mM Tris-HCl, pH 7.3.

GENE INFORMATION

Gene Name	C1QB complement C1q B chain [Homo sapiens (human)]
Official Symbol	C1QB
Synonyms	C1QB; complement component 1, q subcomponent, B chain; complement component 1, q subcomponent, beta polypeptide; complement C1q subcomponent subunit B; complement component C1q, B chain; complement subcomponent C1q chain B;
Gene ID	713
mRNA Refseq	NM_000491
Protein Refseq	NP_000482
MIM	120570
UniProt ID	P02746

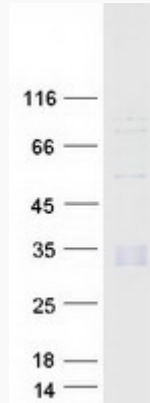
 Tel: 1-631-559-9269 1-516-512-3133

 Email: info@creative-biomart.com  Fax: 1-631-938-8127

 45-1 Ramsey Road, Shirley, NY 11967, USA



SDS-PAGE



Tel: 1-631-559-9269 1-516-512-3133

Email: info@creative-biomart.com Fax: 1-631-938-8127

45-1 Ramsey Road, Shirley, NY 11967, USA