

## Recombinant Human C1QB protein, His-tagged

Cat. No. C1QB-596H Lot. No. (See product label)

### SPECIFICATION

<b>Product Overview</b>	Recombinant Human C1QB protein(NP_000482.3)(Met 1-Ala 253) was expressed in Insect Cells, with a carboxy-terminal polyhistidine tag.
<b>Species</b>	Human
<b>Source</b>	Insect Cells
<b>ProteinLength</b>	1-253 aa
<b>Form</b>	Lyophilized from sterile 50mM Tris, 100mM NaCl, 0.5mM TCEP, 10% glycerol, pH 7.4.
<b>Molecular Mass</b>	The recombinant human C1QB consists of 237 amino acids with the predicted molecular mass of 25 kDa. As a result of glycosylation, rhC1QB migrates as an approximately 30 kDa band in SDS-PAGE under reducing conditions.
<b>Endotoxin</b>	< 1.0 EU per µg of the protein as determined by the LAL method.
<b>Purity</b>	> 94 % as determined by SDS-PAGE
<b>Storage</b>	Store it under sterile conditions at -20°C to -80°C upon receiving. Recommend to aliquot the protein into smaller quantities for optimal storage. Avoid repeated freeze-thaw cycles.
<b>Reconstitution</b>	It is recommended that sterile water be added to the vial to prepare a stock solution of

 Tel: 1-631-559-9269 1-516-512-3133

 Email: [info@creative-biomart.com](mailto:info@creative-biomart.com)  Fax: 1-631-938-8127

 45-1 Ramsey Road, Shirley, NY 11967, USA

0.2 ug/ul. Centrifuge the vial at 4°C before opening to recover the entire contents.

**protein Refseq-Weblink** [http://www.ncbi.nlm.nih.gov/protein/NP\\_000482.3](http://www.ncbi.nlm.nih.gov/protein/NP_000482.3)

**Unit ID** P02746

**Unit ID-Weblink** <http://www.uniprot.org/uniprot/P02746>

## GENE INFORMATION

**Gene Name** C1QB complement component 1, q subcomponent, B chain [ Homo sapiens ]

**Official Symbol** C1QB

**Synonyms** C1QB; complement component 1, q subcomponent, B chain; complement component 1, q subcomponent, beta polypeptide; complement C1q subcomponent subunit B; complement component C1q, B chain; complement subcomponent C1q chain B;

**Gene ID** 713

**mRNA Refseq** [NM\\_000491](#)

**protein Refseq** NP\_000482

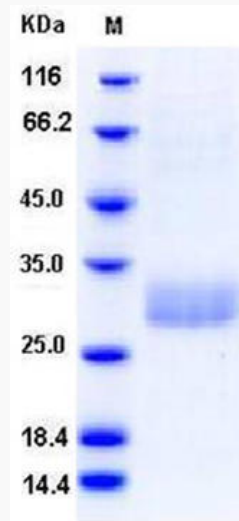
**MIM** [120570](#)

 Tel: 1-631-559-9269 1-516-512-3133

 Email: [info@creative-biomart.com](mailto:info@creative-biomart.com)  Fax: 1-631-938-8127

 45-1 Ramsey Road, Shirley, NY 11967, USA

SDS-PAGE



 Tel: 1-631-559-9269 1-516-512-3133

 Email: [info@creative-biomart.com](mailto:info@creative-biomart.com)  Fax: 1-631-938-8127

 45-1 Ramsey Road, Shirley, NY 11967, USA