

Recombinant Human C1QBP protein, His-tagged

Cat. No. C1QBP-6877H **Lot. No.** (See product label)

SPECIFICATION

Product Overview	Recombinant Human C1QBP (His75-Gln282) protein was fused to His-tag at C-terminus and expressed in E.coli.
Species	Human
Source	E.coli
ProteinLength	His75-Gln282
Description	<p>Complement component 1 Q subcomponent-binding protein, mitochondrial (C1QBP), a member of the MAM33 family, is also known as ASF/SF2-associated protein p32, glycoprotein gC1qBP (C1qBP), mitochondrial matrix protein p32 and hyaluronan-binding protein 1, which is a homotrimer that contains three monomers forming a donut-shaped structure with an unusually asymmetric charge distribution on the surface. C1q associates with C1r and C1s in order to yield the first component of the serum complement system. C1QBP has also been identified as the p32 subunit of pre-mRNA splicing factor SF2, as well as a hyaluronic acid-binding protein. Furthermore, C1QBP has been shown to interact with Protein kinase D1, BAT2, PRKCD, PKC alpha and Protein kinase Mζ .</p>
Predicted N Terminal	His75
Form	Lyophilized from 0.22 μm filtered solution in PBS, pH7.4, 10% trehalose.
Molecular Mass	The protein has a calculated MW of 24.6 kDa. The protein migrates as 35 kDa under

 Tel: 1-631-559-9269 1-516-512-3133

 Email: info@creative-biomart.com  Fax: 1-631-938-8127

 45-1 Ramsey Road, Shirley, NY 11967, USA

	reducing (R) condition (SDS-PAGE).
Endotoxin	Less than 1.0 EU per µg by the LAL method.
Purity	>95% as determined by SDS-PAGE.
Storage	<p>For long term storage, the product should be stored at lyophilized state at -20 centigrade or lower.</p> <p>Please avoid repeated freeze-thaw cycles.</p> <p>This product is stable after storage at:</p> <p>-20 to -70 centigrade for 12 months in lyophilized state;</p> <p>-70 centigrade for 3 months under sterile conditions after reconstitution.</p>
Reconstitution	It is recommended that sterile water be added to the vial to prepare a stock solution of 0.2 ug/ul. Centrifuge the vial at 4°C before opening to recover the entire contents.

GENE INFORMATION

Gene Name	C1QBP
Official Symbol	C1QBP
Synonyms	C1QBP; complement component 1, q subcomponent binding protein; HABP1; complement component 1 Q subcomponent-binding protein, mitochondrial; C1q globular domain binding protein; gC1Q R; gC1qR; hyaluronan binding protein 1; p32; SF2p32; splicing factor SF2 associated protein; p33; glycoprotein gC1qBP; hyaluronan-binding protein 1; mitochondrial matrix protein p32; C1q globular domain-binding protein; splicing factor SF2-associated protein; GC1QBP; gC1Q-R
Gene ID	708

 Tel: 1-631-559-9269 1-516-512-3133

 Email: info@creative-biomart.com  Fax: 1-631-938-8127

 45-1 Ramsey Road, Shirley, NY 11967, USA

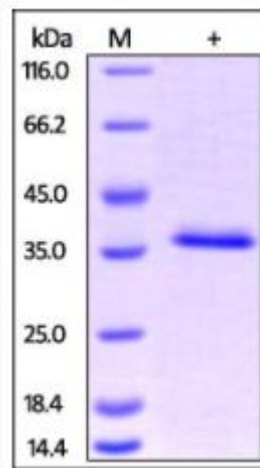
mRNA Refseq NM_001212

Protein Refseq NP_001203

MIM 601269

UniProt ID Q07021

**SDS-PAGE of
C1QBP-6877H**



Human HABP1, His Tag on SDS-PAGE under reducing (R) condition. The gel was stained overnight with Coomassie Blue. The purity of the protein is greater than 95%.

 Tel: 1-631-559-9269 1-516-512-3133

 Email: info@creative-biomart.com  Fax: 1-631-938-8127

 45-1 Ramsey Road, Shirley, NY 11967, USA