

Recombinant Human C1QC Protein, Myc/DDK-tagged, C13 and N15-labeled

Cat. No. C1QC-5655H **Lot. No.** (See product label)

SPECIFICATION

Product Overview	C1QC MS Standard C13 and N15-labeled recombinant protein (NP_758957) with a C-terminal MYC/DDK tag, was expressed in HEK293 cells.
Species	Human
Source	HEK293
Description	This gene encodes the C-chain polypeptide of serum complement subcomponent C1q, which associates with C1r and C1s to yield the first component of the serum complement system. C1q is composed of 18 polypeptide chains which include 6 A-chains, 6 B-chains, and 6 C-chains. Each chain contains an N-terminal collagen-like region and a C-terminal C1q globular domain. C1q deficiency is associated with lupus erythematosus and glomerulonephritis.
Molecular Mass	25.8 kDa
AA Sequence	MDVGPSSLPHLGLKLLLLLLLLPLRGQANTGCYGIPGMPGLPGAPGKDG YDGLPGP KGEPGIPAIPGIRGPKGQKGEPGLPGHPGKNGPMGPPGMPGVPGPMGIPGEPGEE GRYKQKFQSVFTVTRQTHQPPAPNSLIRFNAVL TNPQG DYDTSTGKFTCKV PGLYY FVYHASHTANLCVLLYRSGVKV VFCGHTSKTNQVNSGGVLLRLQV GEEVWLAVND YYDMVGIQGS DSVFSGFLLFPDSGPT RTRPLEQKLISEEDLAANDILDYKDDDDKV
Purity	> 80% as determined by SDS-PAGE and Coomassie blue staining

 Tel: 1-631-559-9269 1-516-512-3133

 Email: info@creative-biomart.com  Fax: 1-631-938-8127

 45-1 Ramsey Road, Shirley, NY 11967, USA

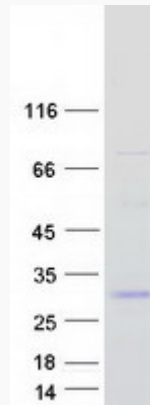
Stability	Stable for 3 months from receipt of products under proper storage and handling conditions.
Storage	Store at -80 centigrade. Avoid repeated freeze-thaw cycles.
Concentration	50 µg/mL as determined by BCA
Storage Buffer	100 mM glycine, 25 mM Tris-HCl, pH 7.3.
GENE INFORMATION	
Gene Name	C1QC complement C1q C chain [Homo sapiens (human)]
Official Symbol	C1QC
Synonyms	C1QC; complement component 1, q subcomponent, C chain; C1QG, complement component 1, q subcomponent, gamma polypeptide; complement C1q subcomponent subunit C; complement component 1, q subcomponent, gamma polypeptide; C1QG; C1Q-C; FLJ27103;
Gene ID	714
mRNA Refseq	NM_172369
Protein Refseq	NP_758957
MIM	120575
UniProt ID	P02747

 Tel: 1-631-559-9269 1-516-512-3133

 Email: info@creative-biomart.com  Fax: 1-631-938-8127

 45-1 Ramsey Road, Shirley, NY 11967, USA

SDS-PAGE



 Tel: 1-631-559-9269 1-516-512-3133

 Email: info@creative-biomart.com  Fax: 1-631-938-8127

 45-1 Ramsey Road, Shirley, NY 11967, USA