

Recombinant Human C1QTNF1 protein, GST-tagged

Cat. No. C1QTNF1-2652H Lot. No. (See product label)

SPECIFICATION

Product Overview	Recombinant Human C1QTNF1 protein(Q9BXJ1)(26-281aa), fused with N-terminal GST tag, was expressed in E.coli.
Species	Human
Source	E.coli
ProteinLength	26-281aa
Form	If the delivery form is liquid, the default storage buffer is Tris/PBS-based buffer, 5%-50% glycerol. If the delivery form is lyophilized powder, the buffer before lyophilization is Tris/PBS-based buffer, 6% Trehalose, pH 8.0.
Molecular Mass	56.7 kDa
Purity	Greater than 85% as determined by SDS-PAGE.
Storage	Store at -20°C/-80°C upon receipt, aliquoting is necessary for mutiple use. Avoid repeated freeze-thaw cycles.
Reconstitution	We recommend that this vial be briefly centrifuged prior to opening to bring the contents to the bottom. Please reconstitute protein in deionized sterile water to a concentration of 0.1-1.0 mg/mL. We recommend to add 5-50% of glycerol (final concentration) and aliquot for long-term storage at -20°C/-80°C.

 Tel: 1-631-559-9269 1-516-512-3133

 Email: info@creative-biomart.com  Fax: 1-631-938-8127

 45-1 Ramsey Road, Shirley, NY 11967, USA

AA Sequence

RVPHVQGEQQEWEGTEELPSPPDHAERAEEQHEKYRPSQDQGLPASRCLRCCDP
 GTSMYPATAVPQINITILKGEKGDGRGLQGKYGKTGSAGARGHTGPKGQKGS
 GAPGERCKSHYAAFVGRKKPMHSNHYYQTVIFDTEFVNLYDHFNMFTGKFYCYVP
 GLYFFSLNVHTWNQKETYLHIMKNEEEVVILFAQVGDRTSIMQSQSLMLELREQDQV
 WVRLYKGERENAIFSEELDTYITFSGYLVKHATEP

GENE INFORMATION

Gene Name C1QTNF1 C1q and tumor necrosis factor related protein 1 [Homo sapiens]

Official Symbol C1QTNF1

Synonyms C1QTNF1; C1q and tumor necrosis factor related protein 1; complement C1q tumor necrosis factor-related protein 1; CTRP1; FLJ90694; G protein coupled receptor interacting protein; GIP; ZSIG37; g protein-coupled receptor-interacting protein;

Gene ID 114897

mRNA Refseq NM_030968

Protein Refseq NP_112230

MIM 610365

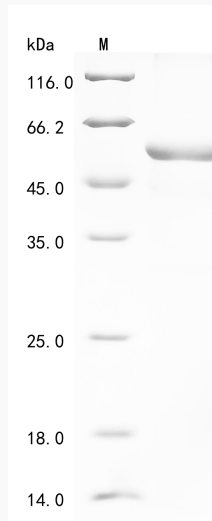
UniProt ID Q9BXJ1

 Tel: 1-631-559-9269 1-516-512-3133

 Email: info@creative-biomart.com  Fax: 1-631-938-8127

 45-1 Ramsey Road, Shirley, NY 11967, USA

SDS-PAGE



 Tel: 1-631-559-9269 1-516-512-3133

 Email: info@creative-biomart.com  Fax: 1-631-938-8127

 45-1 Ramsey Road, Shirley, NY 11967, USA