

Recombinant Human C1QTNF12 protein, His-tagged

Cat. No. C1QTNF12-1637H Lot. No. (See product label)

SPECIFICATION

Product Overview	Recombinant Human C1QTNF12 aa. (Gly92~Gln241 (Accession # Q5T7M4)) fused with N-terminal His tag was produced in E. coli cells.
Species	Human
Source	E.coli
ProteinLength	Gly92~Gln241
Form	Freeze-dried powder
Molecular Mass	Predicted Molecular Mass: 17.8kDa
Endotoxin	<1.0EU per 1ug (determined by the LAL method)
Purity	>95%
Applications	SDS-PAGE; WB; ELISA; IP.
Stability	The thermal stability is described by the loss rate. The loss rate was determined by accelerated thermal degradation test, that is, incubate the protein at 37°C for 48h, and no obvious degradation and precipitation were observed. The loss rate is less than 5% within the expiration date under appropriate storage condition.
Storage	Avoid repeated freeze/thaw cycles. Store at 2-8°C for one month. Aliquot and store at

 Tel: 1-631-559-9269 1-516-512-3133

 Email: info@creative-biomart.com  Fax: 1-631-938-8127

 45-1 Ramsey Road, Shirley, NY 11967, USA

-80°C for 12 months.

Storage buffer

Supplied as lyophilized form in PBS, pH7.4, containing 1mM DTT, 5% trehalose, 0.01% sarcosyl and preservative.

Reconstitution

Reconstitute in sterile PBS, pH7.2-pH7.4.

Isoelectric Point

8.5

GENE INFORMATION

Gene Name

[C1QTNF12 C1q and TNF related 12 \[Homo sapiens \(human\) \]](#)

Official Symbol

[C1QTNF12](#)

Synonyms

C1QTNF12; C1q and TNF related 12; C1QDC2; CTRP12; FAM132A; adipolin; C1q and TNF related protein 12; C1q and tumor necrosis factor related protein 12; C1q domain containing 2; C1q/TNF-related protein 12; adipose-derived insulin-sensitizing factor; complement C1q tumor necrosis factor-related protein 12; family with sequence similarity 132 member A; protein FAM132A

Gene ID

[388581](#)

mRNA Refseq

[NM_001014980.2](#)

Protein Refseq

[NP_001014980.1](#)

UniProt ID

[Q5T7M4](#)

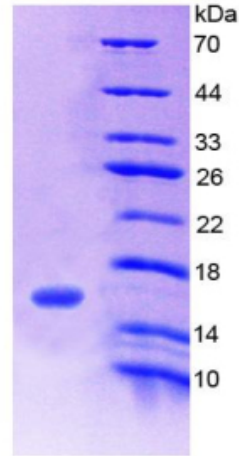
 Tel: 1-631-559-9269 1-516-512-3133

 Email: info@creative-biomart.com  Fax: 1-631-938-8127

 45-1 Ramsey Road, Shirley, NY 11967, USA



SDS-PAGE



Tel: 1-631-559-9269 1-516-512-3133

Email: info@creative-biomart.com Fax: 1-631-938-8127

45-1 Ramsey Road, Shirley, NY 11967, USA