

# Recombinant Mouse C1QTNF3 Protein (23-246 aa), His-Myc-tagged

**Cat. No.** C1QTNF3-2504M    **Lot. No.** (See product label)

## SPECIFICATION

<b>Product Overview</b>	Recombinant Mouse C1QTNF3 Protein (23-246 aa) is produced by E. coli expression system. This protein is fused with a 10xHis tag at the N-terminal and a Myc tag at the C-terminal. Research Area: Metabolism. Protein Description: Full Length of Mature Protein.
<b>Species</b>	Mouse
<b>Source</b>	E.coli
<b>ProteinLength</b>	23-246 aa
<b>Form</b>	Tris-based buffer,50% glycerol
<b>Molecular Mass</b>	31.1 kDa
<b>AA Sequence</b>	QDEYMESPQAGGLPPDCSKCCHGDYGFGRGYQGPPGPPGPPGIPGNHGNNGNNG ATGHEGAKGEKGDKGDLDGPRGERGQHGPKEKGYPGVPELQIAFMASLATHFSN QNSGIIFSSVETNIGNFFDVMTGRFGAPVSGVYFFTFSSMMKHEDVEEVYVYLMHNG NTVFSMYSYETKKGSDTSSNHAVLKLAKGDEVWLRMGNGALHGDHQRFFSTFAGFL LFETK
<b>Purity</b>	> 90% as determined by SDS-PAGE.
<b>Notes</b>	Repeated freezing and thawing is not recommended. Store working aliquots at 4

 Tel: 1-631-559-9269    1-516-512-3133

 Email: [info@creative-biomart.com](mailto:info@creative-biomart.com)     Fax: 1-631-938-8127

 45-1 Ramsey Road, Shirley, NY 11967, USA

centigrade for up to one week.

**Storage**

The shelf life is related to many factors, storage state, buffer ingredients, storage temperature and the stability of the protein itself. Generally, the shelf life of liquid form is 6 months at -20 centigrade/-80 centigrade. The shelf life of lyophilized form is 12 months at -20 centigrade/-80 centigrade.

**Concentration**

A hardcopy of COA will be sent along with the products. Please refer to it for detailed information.

## GENE INFORMATION

**Gene Name**

C1qtnf3 C1q and tumor necrosis factor related protein 3 [ Mus musculus ]

**Official Symbol**

C1QTNF3

**Synonyms**

C1QTNF3; cartducin; cartonectin; secretory protein CORS26; Cors; CTRP3; Corcs; CORS-26; 2310005P21Rik;

**Gene ID**

81799

**mRNA Refseq**

NM\_001204134

**Protein Refseq**

NP\_001191063

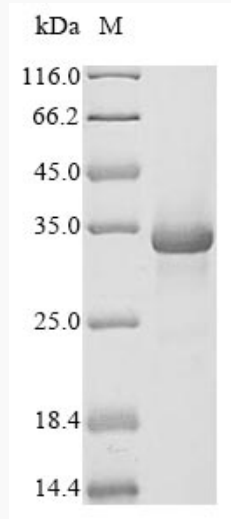
**UniProt ID**

Q9ES30

 Tel: 1-631-559-9269 1-516-512-3133

 Email: [info@creative-biomart.com](mailto:info@creative-biomart.com)  Fax: 1-631-938-8127

 45-1 Ramsey Road, Shirley, NY 11967, USA



(Tris-Glycine gel) Discontinuous SDS-PAGE (reduced) with 5% enrichment gel and 15% separation gel.

 Tel: 1-631-559-9269 1-516-512-3133

 Email: [info@creative-biomart.com](mailto:info@creative-biomart.com)  Fax: 1-631-938-8127

 45-1 Ramsey Road, Shirley, NY 11967, USA