

Recombinant Mouse C1QTNF3 Protein (23-246 aa), His-tagged

Cat. No. C1QTNF3-2761M Lot. No. (See product label)

SPECIFICATION

Product Overview	Recombinant Mouse C1QTNF3 Protein (23-246 aa) is produced by Baculovirus expression system. This protein is fused with a 10xHis tag at the N-terminal. Research Area: Metabolism. Protein Description: Full Length of Mature Protein.
Species	Mouse
Source	Insect Cells
ProteinLength	23-246 aa
Form	Tris-based buffer,50% glycerol
Molecular Mass	26.6 kDa
AA Sequence	QDEYMESPQAGGLPPDCSKCCHGDYGFGRGYQGPPGPPGPPGIPGNHGNNGNNG ATGHEGAKGEKGDKGD LGPRGERGQHGPKEKGYPGVPELQIAFMASLATHFSN QNSGIIFSSVETNIGNFFDVM TGRFGAPVSGVYFFTF SMMKHEDVEEVYVYLMHNG NTVFSMYSYETK GKSDTSSNHAVLKLAKGDEVWLRMGNGALHGDHQR FSTFAGFL LFETK
Purity	> 85% as determined by SDS-PAGE.
Notes	Repeated freezing and thawing is not recommended. Store working aliquots at 4 centigrade for up to one week.

 Tel: 1-631-559-9269 1-516-512-3133

 Email: info@creative-biomart.com  Fax: 1-631-938-8127

 45-1 Ramsey Road, Shirley, NY 11967, USA

Storage

The shelf life is related to many factors, storage state, buffer ingredients, storage temperature and the stability of the protein itself. Generally, the shelf life of liquid form is 6 months at -20 centigrade/-80 centigrade. The shelf life of lyophilized form is 12 months at -20 centigrade/-80 centigrade.

Concentration

A hardcopy of COA will be sent along with the products. Please refer to it for detailed information.

GENE INFORMATION

Gene Name

C1qtnf3 C1q and tumor necrosis factor related protein 3 [*Mus musculus*]

Official Symbol

C1QTNF3

Synonyms

C1QTNF3; cartducin; cartonectin; secretory protein CORS26; Cors; CTRP3; Corcs; CORS-26; 2310005P21Rik;

Gene ID

81799

mRNA Refseq

NM_001204134

Protein Refseq

NP_001191063

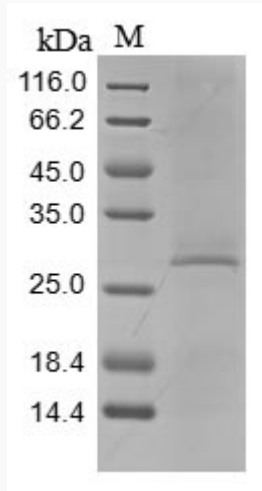
UniProt ID

Q9ES30

 Tel: 1-631-559-9269 1-516-512-3133

 Email: info@creative-biomart.com  Fax: 1-631-938-8127

 45-1 Ramsey Road, Shirley, NY 11967, USA



(Tris-Glycine gel) Discontinuous SDS-PAGE (reduced) with 5% enrichment gel and 15% separation gel.

 Tel: 1-631-559-9269 1-516-512-3133

 Email: info@creative-biomart.com  Fax: 1-631-938-8127

 45-1 Ramsey Road, Shirley, NY 11967, USA