

Recombinant Human C1QTNF3 Protein, Myc/DDK-tagged, C13 and N15-labeled

Cat. No. C1QTNF3-3322H **Lot. No.** (See product label)

SPECIFICATION

Product Overview	C1QTNF3 MS Standard C13 and N15-labeled recombinant protein (NP_852100) with a C-terminal MYC/DDK tag, was expressed in HEK293 cells.
Species	Human
Source	HEK293
Description	C1QTNF3 (C1q And TNF Related 3) is a Protein Coding gene. Diseases associated with C1QTNF3 include Pyosalpinx and Bleeding Disorder, Platelet-Type, 14. An important paralog of this gene is C1QTNF3-AMACR.
Molecular Mass	35 kDa
AA Sequence	MLWRQLIYWQLLALFFLPFCLCQDEYMEVSGRTNKVVARIVQSHQQTGRSGSRREK VRERSHPKTGTVDNNTSTDLKSLRPDELPHPEVDDLAQITTFWGQSPQTGGLPPDC SKCCHGDYSFRGYQGPPGPPGPPGIPGNHGNNGNGATGHEGAKGEKGDKGD GPRGERGQHGPKEGKGYPGIPPELQIAFMASLATHFSNQNSGIIFSSVETNIGNFFD VMTGRFGAPVSGVYFFTFSMMKHEDVEEVYVYLMHNGNTVFSMYSYEMKGS DTS SNHAVLKLAKGDEVWLRMGNGALHGDHQRFFSTFAGFLLFETKTRTRPLEQKLISEE DLAANDILDYKDDDDKV
Purity	> 80% as determined by SDS-PAGE and Coomassie blue staining
Stability	Stable for 3 months from receipt of products under proper storage and handling

 Tel: 1-631-559-9269 1-516-512-3133

 Email: info@creative-biomart.com  Fax: 1-631-938-8127

 45-1 Ramsey Road, Shirley, NY 11967, USA

conditions.

Storage Store at -80 centigrade. Avoid repeated freeze-thaw cycles.

Concentration 50 µg/mL as determined by BCA

Storage Buffer 100 mM glycine, 25 mM Tris-HCl, pH 7.3.

GENE INFORMATION

Gene Name C1QTNF3 C1q and tumor necrosis factor related protein 3 [Homo sapiens (human)]

Official Symbol C1QTNF3

Synonyms C1QTNF3; C1q and tumor necrosis factor related protein 3; complement C1q tumor necrosis factor-related protein 3; 2310005P21Rik; cartonectin; Corcs; Cors; Cors 26; CTRP3; secretory protein CORS26; collagenous repeat-containing sequence of 26-kDa; CORS; CORCS; CORS26; C1ATNF3; CORS-26; FLJ37576;

Gene ID 114899

mRNA Refseq NM_181435

Protein Refseq NP_852100

MIM 612045

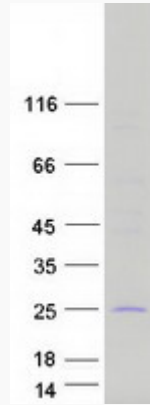
UniProt ID Q9BXJ4

 Tel: 1-631-559-9269 1-516-512-3133

 Email: info@creative-biomart.com  Fax: 1-631-938-8127

 45-1 Ramsey Road, Shirley, NY 11967, USA

SDS-PAGE



 Tel: 1-631-559-9269 1-516-512-3133

 Email: info@creative-biomart.com  Fax: 1-631-938-8127

 45-1 Ramsey Road, Shirley, NY 11967, USA