

Recombinant Human C1QTNF6 Protein, Myc/DDK-tagged, C13 and N15-labeled

Cat. No. C1QTNF6-5194H **Lot. No.** (See product label)

SPECIFICATION

Product Overview	C1QTNF6 MS Standard C13 and N15-labeled recombinant protein (NP_114116) with a C-terminal MYC/DDK tag, was expressed in HEK293 cells.
Species	Human
Source	HEK293
Description	C1QTNF6 (C1q And TNF Related 6) is a Protein Coding gene. Diseases associated with C1QTNF6 include Type 1 Diabetes Mellitus 8 and Autoimmune Polyendocrine Syndrome, Type Ii. Gene Ontology (GO) annotations related to this gene include identical protein binding. An important paralog of this gene is C1QTNF8.
Molecular Mass	30.9 kDa
AA Sequence	<p>MQWLRVRESPGEATGHRVTMVTAALGPVWAALLLFLLMCEIPMVELTFDRAVASGC QRCCDSEDPLDPAHVSSASSSSGRPHALPEIRPYINITILKGDKGDPGPMGLPGYMGR EGPQGEPGPQGSKGDKGEMGSPGAPCQKRFFAFSVGRKTALHSGEDFQTLLEFER VFNLDGCFDMATGQFAAPLRGIYFFSLNVHSWNYKETYVHIMHNQKEAVILYAQPS ERSIMQSQSVMLDLAYGDRVWVRLFKRQRENAIYSNDFDTYITFSGLIKAEDDTRT RPLEQKLISEEDLAANDILDYKDDDDKV</p>
Purity	> 80% as determined by SDS-PAGE and Coomassie blue staining
Stability	Stable for 3 months from receipt of products under proper storage and handling

 Tel: 1-631-559-9269 1-516-512-3133

 Email: info@creative-biomart.com  Fax: 1-631-938-8127

 45-1 Ramsey Road, Shirley, NY 11967, USA

conditions.

Storage Store at -80 centigrade. Avoid repeated freeze-thaw cycles.

Concentration 50 µg/mL as determined by BCA

Storage Buffer 100 mM glycine, 25 mM Tris-HCl, pH 7.3.

GENE INFORMATION

Gene Name C1QTNF6 C1q and tumor necrosis factor related protein 6 [Homo sapiens (human)]

Official Symbol C1QTNF6

Synonyms C1QTNF6; C1q and tumor necrosis factor related protein 6; complement C1q tumor necrosis factor-related protein 6; CTRP6; ZACRP6; complement-c1q tumor necrosis factor-related protein 6;

Gene ID 114904

mRNA Refseq NM_031910

Protein Refseq NP_114116

MIM 614910

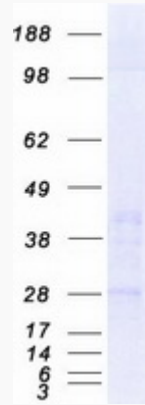
UniProt ID Q9BXI9

 Tel: 1-631-559-9269 1-516-512-3133

 Email: info@creative-biomart.com  Fax: 1-631-938-8127

 45-1 Ramsey Road, Shirley, NY 11967, USA

SDS-PAGE



 Tel: 1-631-559-9269 1-516-512-3133

 Email: info@creative-biomart.com  Fax: 1-631-938-8127

 45-1 Ramsey Road, Shirley, NY 11967, USA