

Recombinant Full Length Human C1QTNF6 Protein, C-Flag-tagged

Cat. No. C1QTNF6-692HFL **Lot. No.** (See product label)

SPECIFICATION

Product Overview	Recombinant Full Length Human C1QTNF6 Protein, fused to Flag-tag at C-terminus, was expressed in Mammalian cells.
Species	Human
Source	Mammalian Cells
Description	Predicted to enable identical protein binding activity. Predicted to be located in extracellular space. Predicted to be integral component of membrane. Predicted to be part of protein-containing complex.
Form	25 mM Tris HCl, pH 7.3, 100 mM glycine, 10% glycerol.
Molecular Mass	30.7 kDa
AA Sequence	<p>MQWLRVRESPGEATGHRVTMVTAALGPVWAALLLFLLMCEIPMVELTFDRAVASGC QRCCDSEDPLDPAH VSSASSSGRPHALPEIRPYINITILKGDKGDPGPMGLPGYMG REGPQGEPPGQGSKGDKGEMGSPGAPCQ KRFFAFSVGRKTALHSGEDFQTLLE RVFVNLDGCFDMATGQFAAPLRGIYFFSLNVHSWNYKETYVHIM HNQKEAVILYAQ PSERSIMQSQSVMLDLAYGDRVWVRLFKRQRENAIYSNDFDTYITFSGHLIKAEDDT RTRPLEQKLISEEDLAANDILDYKDDDDKV</p>
Purity	> 80% as determined by SDS-PAGE and Coomassie blue staining.

 Tel: 1-631-559-9269 1-516-512-3133

 Email: info@creative-biomart.com  Fax: 1-631-938-8127

 45-1 Ramsey Road, Shirley, NY 11967, USA

Stability	Stable for 12 months from the date of receipt of the product under proper storage and handling conditions. Avoid repeated freeze-thaw cycles.
Storage	Store at -80 centigrade.
Concentration	>50 ug/mL as determined by microplate BCA method.
Preparation	Recombinant protein was captured through anti-DDK affinity column followed by conventional chromatography steps.
Protein Families	Secreted Protein, Transmembrane
Full Length	Full L.

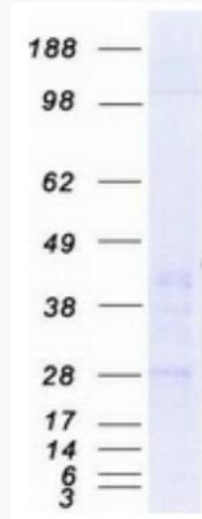
GENE INFORMATION

Gene Name	C1QTNF6 C1q and TNF related 6 [Homo sapiens (human)]
Official Symbol	C1QTNF6
Synonyms	CTFP6; CTRP6; ZACRP6
Gene ID	114904
mRNA Refseq	NM_031910.4
Protein Refseq	NP_114116.3
MIM	614910
UniProt ID	Q9BXI9

 Tel: 1-631-559-9269 1-516-512-3133

 Email: info@creative-biomart.com  Fax: 1-631-938-8127

 45-1 Ramsey Road, Shirley, NY 11967, USA



Coomassie blue staining of purified C1QTNF6 protein.

 Tel: 1-631-559-9269 1-516-512-3133

 Email: info@creative-biomart.com  Fax: 1-631-938-8127

 45-1 Ramsey Road, Shirley, NY 11967, USA