

Recombinant Human C1QTNF9 Protein, GST-tagged

Cat. No. C1QTNF9-5291H **Lot. No.** (See product label)

SPECIFICATION

Product Overview	Human MGC48915 full-length ORF (AAH40438.1, 1 a.a. - 333 a.a.) recombinant protein with GST-tag at N-terminal.
Species	Human
Source	Wheat Germ
Description	C1QTNF9 (C1q And TNF Related 9) is a Protein Coding gene. GO annotations related to this gene include hormone activity. An important paralog of this gene is C1QTNF9B.
Molecular Mass	61 kDa
AA Sequence	<p>MRIWWLLLAIEICTGNINSQDTCRQGHPIPGNPGHNGLPGRDGRDGA KGDKGDA GEPGRPGSPGKDGTSGEKGERGADGKVEAKGIKGDQGSRGS PGKHGPKGLAGPM GEKGLRGETGPQGQKGNKGDVGP TPEGPRGNIGPLGPTGLPGPMGPIGKPGPK GEAGPTGPQGEPGVRGIRGWK GDRGEKGIKIGETLVLPKSAFTVGLTVLSKFPSSDV PIKFDKILYNEFNHYDTAAGKFTCHIAGVYYFYHITVFSRNVQVSLVKNGVKILHTKD AYMSSEDQASGGIVLQLKLGDEVWLQVTGGERFNGLFADEDDDDTTFTGFLLFSSP</p>
Applications	<p>Enzyme-linked Immunoabsorbent Assay Western Blot (Recombinant protein) Antibody Production Protein Array</p>

 Tel: 1-631-559-9269 1-516-512-3133

 Email: info@creative-biomart.com  Fax: 1-631-938-8127

 45-1 Ramsey Road, Shirley, NY 11967, USA

Notes	Best use within three months from the date of receipt of this protein.
Storage	Store at -80 centigrade. Aliquot to avoid repeated freezing and thawing.
Storage Buffer	50 mM Tris-HCl, 10 mM reduced Glutathione, pH=8.0 in the elution buffer.
GENE INFORMATION	
Gene Name	C1QTNF9 C1q and tumor necrosis factor related protein 9 [Homo sapiens]
Official Symbol	C1QTNF9
Synonyms	C1QTNF9; C1q and tumor necrosis factor related protein 9; complement C1q and tumor necrosis factor-related protein 9A; AQL1; C1QTNF9A; CTRP9; MGC48915; complement C1q tumor necrosis factor-related protein 9; complement C1q tumor necrosis factor-related protein 9A; complement C1q and tumor necrosis factor-related protein 9;
Gene ID	338872
mRNA Refseq	NM_178540
Protein Refseq	NP_848635
MIM	614285
UniProt ID	P0C862

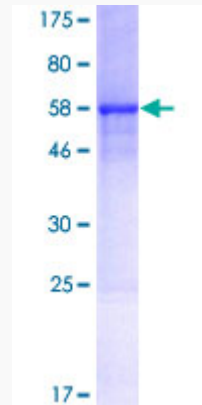
 Tel: 1-631-559-9269 1-516-512-3133

 Email: info@creative-biomart.com  Fax: 1-631-938-8127

 45-1 Ramsey Road, Shirley, NY 11967, USA

Quality Control

Testing:



12.5% SDS-PAGE Stained with Coomassie Blue.

 Tel: 1-631-559-9269 1-516-512-3133

 Email: info@creative-biomart.com  Fax: 1-631-938-8127

 45-1 Ramsey Road, Shirley, NY 11967, USA