

Recombinant Human C1S Protein (Ile438-Pro685), N-His-tagged

Cat. No. C1S-0278H Lot. No. (See product label)

SPECIFICATION

Product Overview	Recombinant human C1S (Ile438-Pro685) was fused with the N-His tag and was expressed in E. coli.
Species	Human
Source	E.coli
ProteinLength	Ile438-Pro685
Form	Lyophilized powder/frozen liquid
Molecular Mass	29.56 kDa
Purity	>90% as determined by SDS-PAGE
Notes	For research use only.
Storage	Use a manual defrost freezer and avoid repeated freeze thaw cycles. Store at 2 to 8 centigrade for one week. Store at -20 to -80 centigrade for twelve months from the date of receipt.
Storage Buffer	0.01M PBS, pH 7.4, 0.02% NLS
Reconstitution	Reconstitute in sterile water for a stock solution.

 Tel: 1-631-559-9269 1-516-512-3133

 Email: info@creative-biomart.com  Fax: 1-631-938-8127

 45-1 Ramsey Road, Shirley, NY 11967, USA

Shipping

They are shipped out with dry ice/blue ice unless customers require otherwise.

GENE INFORMATION
Gene Name

C1S complement component 1, s subcomponent [Homo sapiens (human)]

Official Symbol

C1S

Synonyms

C1S; complement component 1, s subcomponent; complement C1s subcomponent; C1 esterase; basic proline-rich peptide IB-1; complement component 1 subcomponent s; FLJ44757;

Gene ID

716

mRNA Refseq

NM_001734

Protein Refseq

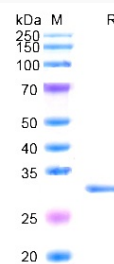
NP_001725

MIM

120580

UniProt ID

P09871

SDS-PAGE


 Tel: 1-631-559-9269 1-516-512-3133

 Email: info@creative-biomart.com  Fax: 1-631-938-8127

 45-1 Ramsey Road, Shirley, NY 11967, USA