

Recombinant Human C1S protein, His-tagged

Cat. No. C1S-10489H Lot. No. (See product label)

SPECIFICATION

Product Overview	Recombinant Human C1S protein(166-688 aa), fused with N-terminal His tag, was expressed in E.coli.
Species	Human
Source	E.coli
ProteinLength	166-688 aa
Form	The purified protein was Lyophilized from sterile PBS (58mM Na ₂ HPO ₄ , 17mM NaH ₂ PO ₄ , 68mM NaCl, pH7.4). 5 % trehalose and 5 % mannitol are added as protectant before lyophilization. The elution buffer contain 300mM imidazole.
AASequence	DDMKNCGVNCSGDVFTALIGEIASPNYPKYPENSRCYQIRLEKGFQVVVTLRRED FDVEAADSAGNCLDSLFFVAGDRQFGPYCGHGFPGLNIETKSNALDIIFQDTLTGQ KKGWKLRYHGDPMPCKEDTPNSVWEPAAKAKYVFRDVVQITCLDGFVEVVEGRVGA TSFYSTCQSNGKWSNSKLCQPVDCGIPESIENGKVEDPESTLFGSVIRYTCEEPYY YMENGGGGGEYHCAGNGSWVNEVLGPELPKCVPCGVPREPFEEKQRIIGGSDADI KNFPWQVFFDNPWAGGALINEYWVLTAAHVVEGNREPTMYVGSTSVQTSRLAKSK MLTPEHVFIHPGWKLLVPEGRTNFDNDIALVRLKDPVKMGPTVSPICLPGTSSDYN LMDGDLGLISGWGRTEKRDRAVRLKAARLPVAPLRKCKEYKVEKPTADAEAYVFTP NMICAGGEKGMDSCKGDSGGAFVQDPNDKTKFYAAGLVSWGPQCGTYGLYTRV KNYVDWIMKTMQENSTPRED
Purity	85%, by SDS-PAGE with Coomassie Brilliant Blue staining.

 Tel: 1-631-559-9269 1-516-512-3133

 Email: info@creative-biomart.com  Fax: 1-631-938-8127

 45-1 Ramsey Road, Shirley, NY 11967, USA

Storage Store at 2-8°C for 1-2 weeks. Aliquot and store at -20°C to -80°C for up to 3 months, reconstitution with sterile water and addition of an equal volume of glycerol. Avoid repeat freeze-thaw cycles.

Reconstitution Dissolve the product in 200 µl sterile water to achieve a working concentration of 0.25 g/µl. If experimental compatibility allows, mix the aqueous solution with an equal volume of glycerol (1:1 ratio) after initial reconstitution.

GENE INFORMATION

Gene Name C1S complement component 1, s subcomponent [Homo sapiens]

Official Symbol C1S

Synonyms C1S; complement component 1, s subcomponent; complement C1s subcomponent; C1 esterase; basic proline-rich peptide IB-1; complement component 1 subcomponent s; FLJ44757;

Gene ID 716

mRNA Refseq NM_001734

Protein Refseq NP_001725

MIM 120580

UniProt ID P09871

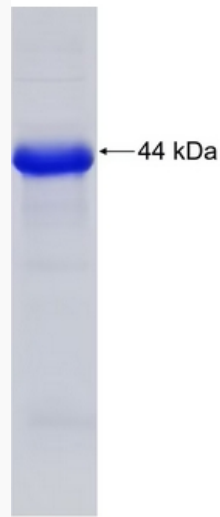
 Tel: 1-631-559-9269 1-516-512-3133

 Email: info@creative-biomart.com  Fax: 1-631-938-8127

 45-1 Ramsey Road, Shirley, NY 11967, USA



SDS-PAGE



☎ Tel: 1-631-559-9269 1-516-512-3133

☎ Email: info@creative-biomart.com ☎ Fax: 1-631-938-8127

☎ 45-1 Ramsey Road, Shirley, NY 11967, USA