

# Recombinant Human C1S Protein, Myc/DDK-tagged, C13 and N15-labeled

**Cat. No.** C1S-5501H    **Lot. No.** (See product label)

## SPECIFICATION

### Product Overview

C1S MS Standard C13 and N15-labeled recombinant protein (NP\_001725) with a C-terminal MYC/DDK tag, was expressed in HEK293 cells.

### Species

Human

### Source

HEK293

### Description

This gene encodes a serine protease, which is a major constituent of the human complement subcomponent C1. C1s associates with two other complement components C1r and C1q in order to yield the first component of the serum complement system. Defects in this gene are the cause of selective C1s deficiency.

### Molecular Mass

76.68 kDa

### AA Sequence

MWCIVLFSLLAWVYAEP TMYGEILSPNYPQAYPSEVEKSWDIEVPEGYGIHLYFTHL  
 DIELENCAYDSVQIISGDTEEGRLCGQRSSNNPHSPIVEEFQVPYNKLQVIFKSDFS  
 NEERFTGFAAYYVATDINECTDFVDVPCSHFCNNFIGGYFCSCPPEYFLHDDMKNC  
 GVNCSGDVFTALIGEIASPNYPKYPENSRCYQIRLEKGFQVVVTLRREDFDVEAA  
 DSAGNCLDSL VFVAGDRQFGPYCGHGFPGPLNIETKSNALDIIFQTDLTGQKKGWKL  
 RYHGDPMPCKEDTPNSVWEPAKAKYVFRDVVQITCLDGFVVEGRV GATSFYST  
 CQSN GKWSNSKLCQPVDCGIPESIENGKVEDPESTLFGSVIRYTCEEPYYMENG  
 GGGEYHCAGNGSWVNEVLGPELPKCVPCGVPREPFE EKQRIIGGSDADIKNFPW  
 QVFFDNPWAGGALINEYWVLTAAHVVEGNREPTMYVGSTSVQTSRLAKSKMLTPE

 Tel: 1-631-559-9269    1-516-512-3133

 Email: [info@creative-biomart.com](mailto:info@creative-biomart.com)     Fax: 1-631-938-8127

 45-1 Ramsey Road, Shirley, NY 11967, USA

HVFIHPGWKLLLEVPEGR TNFDNDIALVRLKDPVKMGPTVSPICLPGTSSDYNLMDGD  
 LGLISGWGRTEKRDR AURLKAARLPVAPLRKCKEYKVEKPTADAEAYVFTPNMICAG  
 GEKGMDSCKGDSGGAF AVQDPNDKTKFYAAGLVSWGPQCGTYGLYTRVKNYVDW  
 IMKTMQENSTPREDTRTRPLEQKLISEEDLAANDILDYKDDDDKV

**Purity** > 80% as determined by SDS-PAGE and Coomassie blue staining

**Stability** Stable for 3 months from receipt of products under proper storage and handling conditions.

**Storage** Store at -80 centigrade. Avoid repeated freeze-thaw cycles.

**Concentration** 50 µg/mL as determined by BCA

**Storage Buffer** 100 mM glycine, 25 mM Tris-HCl, pH 7.3.

## GENE INFORMATION

**Gene Name** C1S complement C1s [ Homo sapiens (human) ]

**Official Symbol** C1S

**Synonyms** C1S; complement component 1, s subcomponent; complement C1s subcomponent; C1 esterase; basic proline-rich peptide IB-1; complement component 1 subcomponent s; FLJ44757;

**Gene ID** 716

**mRNA Refseq** NM\_001734

**Protein Refseq** NP\_001725

 Tel: 1-631-559-9269 1-516-512-3133

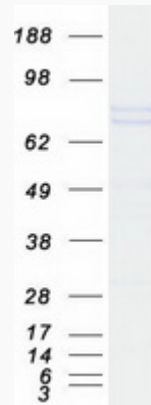
 Email: [info@creative-biomart.com](mailto:info@creative-biomart.com)  Fax: 1-631-938-8127

 45-1 Ramsey Road, Shirley, NY 11967, USA

**MIM** 120580

**UniProt ID** P09871

**SDS-PAGE**



 Tel: 1-631-559-9269 1-516-512-3133

 Email: [info@creative-biomart.com](mailto:info@creative-biomart.com)  Fax: 1-631-938-8127

 45-1 Ramsey Road, Shirley, NY 11967, USA