

Active Recombinant Mouse C1qa protein, His-tagged

Cat. No. C1qa-2609M Lot. No. (See product label)

SPECIFICATION

| | |
|-------------------------|---|
| Product Overview | Active Recombinant Mouse C1qa protein(P98086)(23-245 aa), fused with N-terminal His tag, was expressed in E.coli. |
| Species | Mouse |
| Source | E.coli |
| ProteinLength | 23-245 aa |
| Form | PBS, pH7.4, containing 0.01% SKL, 1mM DTT, 5% Trehalose and Proclin300. |
| Bio-activity | <p>Complement Component 1, Q Subcomponent A (C1qA) is a protein that plays a crucial role in the innate immune system. It is part of the C1 complex, which is the first component of the classical complement pathway. The C1 complex is composed of one molecule each of C1q, C1r, and C1s. C1q is the recognition subcomponent of the complex and initiates the complement cascade. C1qA plays a key role in eliminating pathogens, regulating inflammatory response and maintaining immune tolerance. It is reported that C1qA can bind to the C-terminal of CALR through its gelatin-as-region, and this interaction may play an important role in regulating complement activation and cell signaling. Thus a functional binding ELISA assay was conducted to detect the interaction of recombinant mouse C1qA and recombinant human CALR. Briefly, C1qA was diluted serially in PBS with 0.01% BSA (pH 7.4). Duplicate samples of 100 µl were then transferred to CALR-coated microtiter wells and incubated for 1h at 37°C. Wells were washed with PBST and incubated for 1h</p> |

 Tel: 1-631-559-9269 1-516-512-3133

 Email: info@creative-biomart.com  Fax: 1-631-938-8127

 45-1 Ramsey Road, Shirley, NY 11967, USA

with anti-C1qA pAb, then aspirated and washed 3 times. After incubation with HRP labelled secondary antibody for 1h at 37°C, wells were aspirated and washed 5 times. With the addition of substrate solution, wells were incubated 15-25 minutes at 37°C. Finally, add 50 µ stop solution to the wells and read at 450/630 nm immediately. The binding activity of recombinant mouse C1qA and recombinant human CALR was shown, the EC50 for this effect is 0.03 ug/mL.

| | |
|-----------------------|--|
| Molecular Mass | 27.2kDa |
| Endotoxin | <1.0EU per 1µg (determined by the LAL method). |
| Purity | > 95% |
| Storage | Avoid repeated freeze/thaw cycles. Store at 2-8°C for one month. Store at -20°C for 12 months. Aliquot and store at -80°C for 12 months. |
| Reconstitution | Reconstitute in 10mM PBS (pH7.4) to a concentration of 0.1-1.0 mg/mL. Do not vortex. |

GENE INFORMATION

| | |
|------------------------|--|
| Gene Name | C1qa complement component 1, q subcomponent, alpha polypeptide [<i>Mus musculus</i>] |
| Official Symbol | C1qa |
| Synonyms | C1QA; complement component 1, q subcomponent, alpha polypeptide; complement C1q subcomponent subunit A; C1q; AI255395; |
| Gene ID | 12259 |

 Tel: 1-631-559-9269 1-516-512-3133

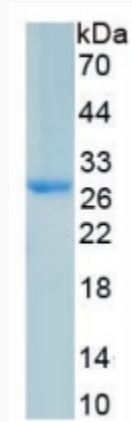
 Email: info@creative-biomart.com  Fax: 1-631-938-8127

 45-1 Ramsey Road, Shirley, NY 11967, USA

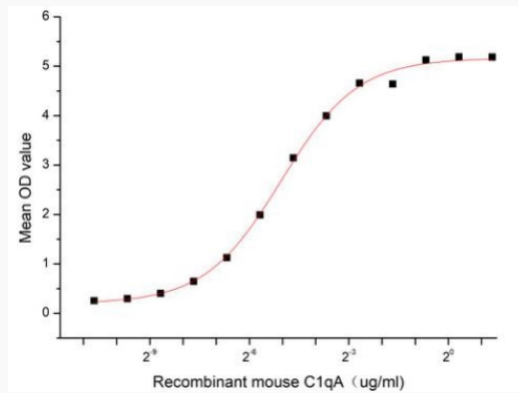
mRNA Refseq [NM_007572](#)

Protein Refseq [NP_031598](#)

SDS-PAGE



Activity



 Tel: 1-631-559-9269 1-516-512-3133

 Email: info@creative-biomart.com  Fax: 1-631-938-8127

 45-1 Ramsey Road, Shirley, NY 11967, USA