

## Recombinant Mouse C1qtnf6 protein, His-tagged

Cat. No. C1qtnf6-2323M Lot. No. (See product label)

### SPECIFICATION

|                         |   |
|-------------------------|---|
| <b>Product Overview</b> | Recombinant Mouse C1qtnf6 protein(Q6IR41)(25-264aa), fused with C-terminal His tag, was expressed in Yeast.   |
| <b>Species</b>          | Mouse   |
| <b>Source</b>           | Yeast   |
| <b>ProteinLength</b>    | 25-264aa  |
| <b>Tag</b>              | C-His   |
| <b>Form</b>             | If the delivery form is liquid, the default storage buffer is Tris/PBS-based buffer, 5%-50% glycerol. If the delivery form is lyophilized powder, the buffer before lyophilization is Tris/PBS-based buffer, 6% Trehalose, pH 8.0.                |
| <b>Molecular Mass</b>   | 27.9 kDa  |
| <b>Purity</b>           | Greater than 90% as determined by SDS-PAGE.   |
| <b>Storage</b>          | Store at -20°C/-80°C upon receipt, aliquoting is necessary for mutiple use. Avoid repeated freeze-thaw cycles.  |
| <b>Reconstitution</b>   | We recommend that this vial be briefly centrifuged prior to opening to bring the contents to the bottom. Please reconstitute protein in deionized sterile water to a concentration of 0.1-1.0 mg/mL. We recommend to add 5-50% of glycerol (final |

 Tel: 1-631-559-9269 1-516-512-3133

 Email: [info@creative-biomart.com](mailto:info@creative-biomart.com)  Fax: 1-631-938-8127

 45-1 Ramsey Road, Shirley, NY 11967, USA

concentration) and aliquot for long-term storage at -20°C/-80°C.

**AA Sequence**

VPTEETTFGESVASHLPKGCRRCCDPEDLMSSDDTVQAPVSPYVLPEVRPYINITILK  
 GDKGDRGPTGTPGKPGKNGTRGDRGSQGVKGDKGQAGSPGSSCQTHYSAFVSG  
 RKTGLHSSFNLSLLFDRVFNVDGHFDMATGSFVAPLRGLYFFSLNVHSWNYKET  
 YVHIVHNEQAVVILYAQPSESRIMQSQSVMLPLVPGDRVWVRLFKRERENGIYSDDV  
 DTYITFSGHLIKAEDN

## GENE INFORMATION

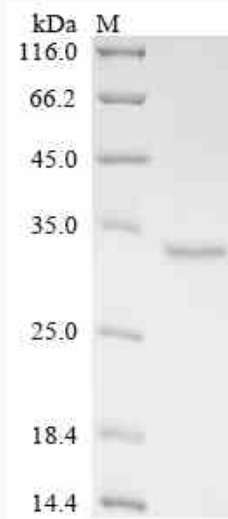
|                        |   |
|------------------------|---|
| <b>Gene Name</b>       | C1qtnf6 C1q and tumor necrosis factor related protein 6 [ <i>Mus musculus</i> ]   |
| <b>Official Symbol</b> | C1qtnf6   |
| <b>Synonyms</b>        | C1QTNF6; C1q and tumor necrosis factor related protein 6; complement C1q tumor necrosis factor-related protein 6; CTRP6; 2810036M19Rik; |
| <b>Gene ID</b>         | 72709   |
| <b>mRNA Refseq</b>     | NM_001204152  |
| <b>Protein Refseq</b>  | NP_001191081  |

 Tel: 1-631-559-9269 1-516-512-3133

 Email: [info@creative-biomart.com](mailto:info@creative-biomart.com)  Fax: 1-631-938-8127

 45-1 Ramsey Road, Shirley, NY 11967, USA

**SDS-PAGE**



 Tel: 1-631-559-9269 1-516-512-3133

 Email: [info@creative-biomart.com](mailto:info@creative-biomart.com)  Fax: 1-631-938-8127

 45-1 Ramsey Road, Shirley, NY 11967, USA