

Recombinant Mouse C1rl protein(44-482aa), His-tagged

Cat. No. C1rl-3922M Lot. No. (See product label)

SPECIFICATION

Product Overview	Recombinant Mouse C1rl protein(Q3UZ09)(44-482aa), fused with N-terminal His tag, was expressed in E. coli.
Species	Mouse
Source	E.coli
ProteinLength	44-482aa
Form	If the delivery form is liquid, the default storage buffer is Tris/PBS-based buffer, 5%-50% glycerol. If the delivery form is lyophilized powder, the buffer before lyophilization is Tris/PBS-based buffer, 6% Trehalose, pH 8.0.
Molecular Mass	54.5 kDa
Purity	Greater than 85% as determined by SDS-PAGE.
Storage	Store at -20°C/-80°C upon receipt, aliquoting is necessary for mutiple use. Avoid repeated freeze-thaw cycles.
Reconstitution	We recommend that this vial be briefly centrifuged prior to opening to bring the contents to the bottom. Please reconstitute protein in deionized sterile water to a concentration of 0.1-1.0 mg/mL. We recommend to add 5-50% of glycerol (final concentration) and aliquot for long-term storage at -20°C/-80°C.

 Tel: 1-631-559-9269 1-516-512-3133

 Email: info@creative-biomart.com  Fax: 1-631-938-8127

 45-1 Ramsey Road, Shirley, NY 11967, USA

AA Sequence

SVLLAQQSPQQLTSPGYPEPYLKGQESHTDIEAPEGFAVRLTFQDFDLEPSPDCEG
 DSVTISTGGTDATRLCGRQGSPLGNPPGHREFVSSGRSLRLTFQAHSSSKSKITHLH
 KGFLALYQAVAVNQPNGDTEAVTTPGAPKIQNHCQDPYYKADQTGTLSCPSSWKW
 KDRQDGGVEVPECVPCGRPVVPLAENPNTFGSSRAKLGNFVWQAFTSIYGRGGGA
 LLGDRWILTAHTIYPKDSIYLRRNQNVFVFLGHTDIDELLKLGHPVRRVVVHPDYR
 QHESHNFNGDIALLELEQRVPLGNLLPVCLPDNETLYHSGLWGYVSGFGVEMGWL
 TTKLKYSKLPVAPREACEAWLHQRQRTEVFSNDMFCVGEEMQVNSVCQGDGSGSV
 YVVWDDLALRWVATGIVSWGIGCGKGYGFYTKVLSYMDWIKRVIEGKD

GENE INFORMATION

Gene Name [C1rl complement component 1, r subcomponent-like \[Mus musculus \]](#)

Official Symbol [C1rl](#)

Synonyms C1RL; complement component 1, r subcomponent-like; complement C1r subcomponent-like protein; C1r-like protein; complement component 1, r subcomponent like protein; C1rl1; C1rlp; C1r-LP;

Gene ID [232371](#)

mRNA Refseq [NM_181344](#)

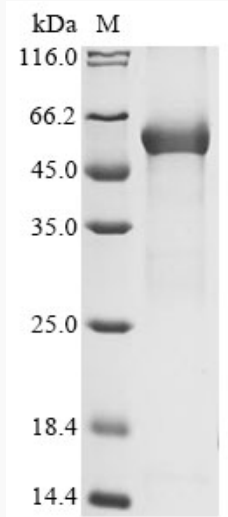
Protein Refseq [NP_851989](#)

 Tel: 1-631-559-9269 1-516-512-3133

 Email: info@creative-biomart.com  Fax: 1-631-938-8127

 45-1 Ramsey Road, Shirley, NY 11967, USA

SDS-PAGE



 Tel: 1-631-559-9269 1-516-512-3133

 Email: info@creative-biomart.com  Fax: 1-631-938-8127

 45-1 Ramsey Road, Shirley, NY 11967, USA