

Recombinant Rat C1rl protein, His&Myc-tagged

Cat. No. C1rl-5767R Lot. No. (See product label)

SPECIFICATION

Product Overview	Recombinant Rat C1rl protein(Q6IE64)(23-461aa), fused with N-terminal His tag and C-terminal Myc tag, was expressed in E.coli.
Species	Rat
Source	E.coli
ProteinLength	23-461aa
Form	If the delivery form is liquid, the default storage buffer is Tris/PBS-based buffer, 5%-50% glycerol. If the delivery form is lyophilized powder, the buffer before lyophilization is Tris/PBS-based buffer, 6% Trehalose, pH 8.0.
Molecular Mass	56.1 kDa
Purity	Greater than 90% as determined by SDS-PAGE.
Storage	Store at -20°C/-80°C upon receipt, aliquoting is necessary for mutiple use. Avoid repeated freeze-thaw cycles.
Reconstitution	We recommend that this vial be briefly centrifuged prior to opening to bring the contents to the bottom. Please reconstitute protein in deionized sterile water to a concentration of 0.1-1.0 mg/mL. We recommend to add 5-50% of glycerol (final concentration) and aliquot for long-term storage at -20°C/-80°C.

 Tel: 1-631-559-9269 1-516-512-3133

 Email: info@creative-biomart.com  Fax: 1-631-938-8127

 45-1 Ramsey Road, Shirley, NY 11967, USA



AA Sequence

QQFPQQLTSPGYPEPYIKGQESHADIEAPEGFAVRLIFQDFDLEPSPGCEGDSVTIST
RGTDATRLCGQQGSSLGSPPNQMEFVSSGRSLRLTFRAHSSKNKVTHLHKGFLALY
QAAVSQPNGDAEAFTTPGANPPEIQNHCPGPYYKKEEQTGLSCPSSRKWKDRQRG
EEVPECVPVCGRPVPIAENPNTFGSSRAKPGNFPWQAFTSIYGRGGGALLGDRWI
LTAHTIFPKDSIYLRKNKTVNVFLGHTDVEDELLKLGHPVRRVVVHPDYRQEESHN
FDGDIALLEHRVPLGPSLLPVCLPDNETLYHSGLWGYISGFGVEMGWLTTKLKYS
KLPVAPREACEAWLRQRQRTEVFSDNMFCVGEEMQVNSVCQGDSGSGSVYVVWDD
RALRWWATGIVSWGVCCKGKGYGFYTKVLSYVDWIKGVIECKDRCPEA

GENE INFORMATION

Gene Name [C1rl complement component 1, r subcomponent-like \[Rattus norvegicus \]](#)

Official Symbol [C1rl](#)

Synonyms C1RL; complement component 1, r subcomponent-like; complement C1r subcomponent-like protein; C1r-LP; C1r-like protein;

Gene ID [408246](#)

mRNA Refseq [NM_001002804](#)

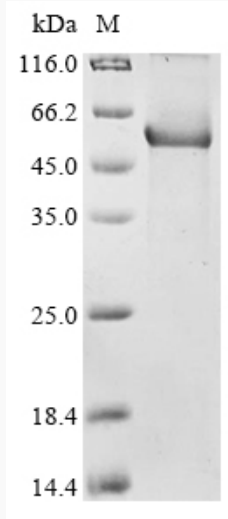
Protein Refseq [NP_001002804](#)

Tel: 1-631-559-9269 1-516-512-3133

Email: info@creative-biomart.com Fax: 1-631-938-8127

45-1 Ramsey Road, Shirley, NY 11967, USA

SDS-PAGE



 Tel: 1-631-559-9269 1-516-512-3133

 Email: info@creative-biomart.com  Fax: 1-631-938-8127

 45-1 Ramsey Road, Shirley, NY 11967, USA