

# Recombinant Full Length Rat complement C1s Protein, His&Myc tagged

**Cat. No.** C1s-20RFL    **Lot. No.** (See product label)

## SPECIFICATION

<b>Product Overview</b>	Recombinant Full Length Rat complement C1s Protein with N-10xHis and C-Myc tag was expressed in E. coli.
<b>Species</b>	Rat
<b>Source</b>	E.coli
<b>ProteinLength</b>	16-688 aa
<b>Description</b>	Predicted to enable identical protein binding activity and serine-type endopeptidase activity. Involved in glial cell differentiation and response to cAMP. Located in extracellular region. Human ortholog(s) of this gene implicated in Ehlers-Danlos syndrome periodontal type 2. Orthologous to human C1S (complement C1s).
<b>Tag</b>	N-10xHis and C-Myc
<b>Molecular Mass</b>	78 kDa
<b>AA Sequence</b>	MHHHHHHHHHEPTMYGEILSPNYPQAYPNEVVKTWDIEVPEGFGIHLFYTHLDME LSENCAYDSVQIISGGIEERLCGQRTSKSPNSPTVEEFQFPYNRLQVVFTSDFSNE ERFTGFAAYYSAVDVNECTDFTDVPCSHFCNNFIGGYFCSCPPEYFLHDDMRTCGV NCSGDVFTALIGEIASPNYPNPYPENSRCEYQIRLQEGFRLVLTIRREDFDVEPADSE GNCHDSLTFAAKNQQFGPYCGNGFPGPLTIKTSNTLDIVFQTDLTGQNKGWKRLRY HGDPIPCPKEISANSIWEPEKAKYVFKDVVKITCVDGFEVVEGNVVGSTSFYSTCQSN

 Tel: 1-631-559-9269    1-516-512-3133

 Email: [info@creative-biomart.com](mailto:info@creative-biomart.com)     Fax: 1-631-938-8127

 45-1 Ramsey Road, Shirley, NY 11967, USA

GQWSNSRLECQPVDCGVPEPIENGKVEDPEDTVFGSVIHYTCEEPYYMEQE EGG  
 EYHCAANGSWVNDQLGVLPKCIPVCGVPTEPFKVQQRIFGGYSTKIQSFPWQVYF  
 ESPRGGGALIDEYWVLTAAHVVEGNSDPVMYVGSTLLKIERLRNAQRLITERVIIHPS  
 WKQEDDLNTRTNFDNDIALVQLKDPVKMGPTVAPICLPETSSDYNPSEGLGLISGW  
 GR TENRTNVIQLRGAKLPITSLEKCQQVKVENPKARSNDYVFTDNMICAGEKGV DSC  
 EGDSSGAFALPVPNVKDPKFYVAGLVSWGKCGTYGIYTKVKNYVDWILKTMQENS  
 GPKKDEQKLISEEDL

**Endotoxin** < 1 EU/μg by LAL

**Purity** > 85% by SDS-PAGE

**Storage** Store it under sterile conditions at -20 to -80 centigrade. It is recommended that the protein be aliquoted for optimal storage. Avoid repeated freeze-thaw cycles.

**Storage Buffer** Sterile PBS, pH7.4

**Concentration** 0.43 mg/mL by Bradford

## GENE INFORMATION

**Gene Name** C1s complement C1s [ *Rattus norvegicus* (Norway rat) ]

**Official Symbol** C1s

**Synonyms** C1s; complement C1s; complement C1s subcomponent; C1 esterase; complement component 1 subcomponent s; r-gsp;

**Gene ID** 192262

**mRNA Refseq** NM\_138900

 Tel: 1-631-559-9269 1-516-512-3133

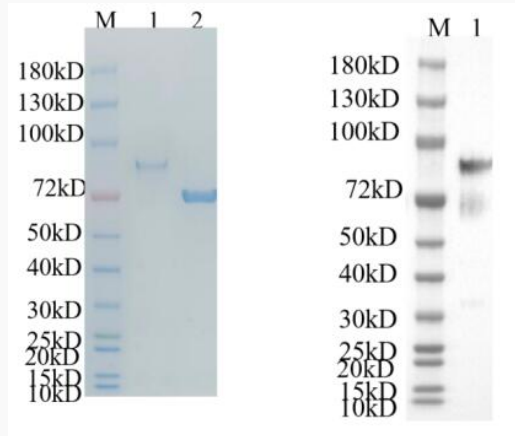
 Email: [info@creative-biomart.com](mailto:info@creative-biomart.com)  Fax: 1-631-938-8127

 45-1 Ramsey Road, Shirley, NY 11967, USA

**Protein Refseq** NP\_620255

**UniProt ID** G3V7L3

**Reducing 4%-20%  
SDS-PAGE (CBB  
stained) and WB  
(Anti-His Mouse  
Monoclonal  
antibody) analysis  
profiles of purified  
C1s.**



1. CTP  
2. BSA

 Tel: 1-631-559-9269 1-516-512-3133

 Email: [info@creative-biomart.com](mailto:info@creative-biomart.com)  Fax: 1-631-938-8127

 45-1 Ramsey Road, Shirley, NY 11967, USA