

Active Recombinant Human C2 protein, His-tagged

Cat. No. C2-6878H Lot. No. (See product label)

SPECIFICATION

Product Overview	Active Recombinant Human C2 protein(NP_000054.2) (Met 1-Leu 752) was expressed in HEK293 with a C-terminal polyhistidine tag.
Species	Human
Source	HEK293
ProteinLength	1-752 aa
Form	Lyophilized from sterile PBS, pH 7.4.
Bio-activity	Measured by its ability to cleave a colorimetric peptide substrate, N-carbobenzyloxy-Gly-Arg-ThioBenzyl ester (Z-GR-SBzl), in the presence of 5,5'Dithiobis (2-nitrobenzoic acid) (DTNB). The specific activity is >100 pmoles/min/μg.
Molecular Mass	The single-chain form of recombinant human complement component C2 comprises 743 amino acids and has a calculated molecular mass of 82.5 kDa. In SDS-PAGE under reducing conditions, the apparent molecular mass of rhC2 is 90-100 kDa as a result of glycosylation.
Endotoxin	< 1.0 EU per μg of the protein as determined by the LAL method.
Purity	> 97 % as determined by SDS-PAGE and SEC-HPLC Analysis.
Storage	Store it under sterile conditions at -20°C to -80°C upon receiving. Recommend to

 Tel: 1-631-559-9269 1-516-512-3133

 Email: info@creative-biomart.com  Fax: 1-631-938-8127

 45-1 Ramsey Road, Shirley, NY 11967, USA

aliquot the protein into smaller quantities for optimal storage. Avoid repeated freeze-thaw cycles.

Reconstitution

It is recommended that sterile water be added to the vial to prepare a stock solution of 0.2 ug/ul. Centrifuge the vial at 4°C before opening to recover the entire contents.

GENE INFORMATION

Gene Name [C2 complement component 2 \[Homo sapiens \]](#)

Official Symbol [C2](#)

Synonyms C2; complement component 2; complement C2; C3/C5 convertase; complement component C2; CO2; DKFZp779M0311;

Gene ID [717](#)

mRNA Refseq [NM_000063](#)

Protein Refseq [NP_000054](#)

MIM [613927](#)

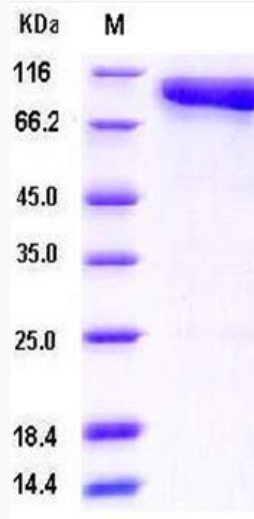
UniProt ID [P06681](#)

 Tel: 1-631-559-9269 1-516-512-3133

 Email: info@creative-biomart.com  Fax: 1-631-938-8127

 45-1 Ramsey Road, Shirley, NY 11967, USA

SDS-PAGE



 Tel: 1-631-559-9269 1-516-512-3133

 Email: info@creative-biomart.com  Fax: 1-631-938-8127

 45-1 Ramsey Road, Shirley, NY 11967, USA