

Recombinant Human C2 protein, hFc-tagged

Cat. No. C2-7265H Lot. No. (See product label)

SPECIFICATION

| | |
|-------------------------|--|
| Product Overview | Recombinant Human C2 protein(NP_000054.2) (Met 1-Leu 752) was expressed in HEK293, fused with the Fc region of human IgG1 at the C-terminus. |
| Species | Human |
| Source | HEK293 |
| ProteinLength | 1-752 aa |
| Form | Lyophilized from sterile PBS, pH 7.4. |
| Molecular Mass | The recombinant human complement component C2/Fc chimera is a disulfide-linked homodimeric protein. The reduced monomer consists of 970 amino acids and has a calculated molecular mass of 110 kDa. As a result of glycosylation, the apparent molecular mass of rhC2/Fc monomer is approximately 110-130 kDa in reduced SDS-PAGE. |
| Endotoxin | < 1.0 EU per µg of the protein as determined by the LAL method. |
| Purity | > 95 % as determined by SDS-PAGE |
| Storage | Store it under sterile conditions at -20°C to -80°C upon receiving. Recommend to aliquot the protein into smaller quantities for optimal storage. Avoid repeated freeze-thaw cycles. |

 Tel: 1-631-559-9269 1-516-512-3133

 Email: info@creative-biomart.com  Fax: 1-631-938-8127

 45-1 Ramsey Road, Shirley, NY 11967, USA

Reconstitution It is recommended that sterile water be added to the vial to prepare a stock solution of 0.2 ug/ul. Centrifuge the vial at 4°C before opening to recover the entire contents.

GENE INFORMATION

Gene Name C2 complement component 2 [Homo sapiens]

Official Symbol C2

Synonyms C2; complement component 2; complement C2; C3/C5 convertase; complement component C2; CO2; DKFZp779M0311;

Gene ID 717

mRNA Refseq NM_000063

Protein Refseq NP_000054

MIM 613927

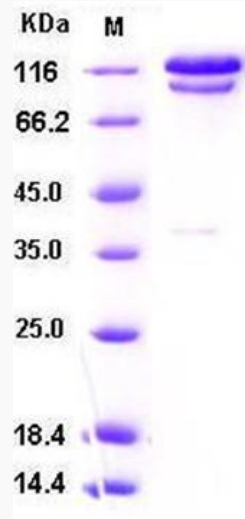
UniProt ID P06681

 Tel: 1-631-559-9269 1-516-512-3133

 Email: info@creative-biomart.com  Fax: 1-631-938-8127

 45-1 Ramsey Road, Shirley, NY 11967, USA

SDS-PAGE



 Tel: 1-631-559-9269 1-516-512-3133

 Email: info@creative-biomart.com  Fax: 1-631-938-8127

 45-1 Ramsey Road, Shirley, NY 11967, USA