

Recombinant Rat C2 protein, His & T7-tagged

Cat. No. C2-7847R Lot. No. (See product label)

SPECIFICATION

Product Overview	Recombinant Rat C2 aa. (Asn473~Arg723 (Accession# Q6MG73)) fused with N-terminal His & T7 tag was produced in E. coli cells.
Species	Rat
Source	E.coli
ProteinLength	Asn473~Arg723
Description	Likely component of the classical pathway of the complement cascade; sequence is found within the major histocompatibility complex.
Form	Freeze-dried powder
Molecular Mass	Predicted Molecular Mass: 31.6kDa
Endotoxin	<1.0EU per 1g (determined by the LAL method)
Purity	>95%
Characteristic	The isoelectric point is 7.3.
Applications	SDS-PAGE; WB; ELISA; IP
Stability	The thermal stability is described by the loss rate. The loss rate was determined by

 Tel: 1-631-559-9269 1-516-512-3133

 Email: info@creative-biomart.com  Fax: 1-631-938-8127

 45-1 Ramsey Road, Shirley, NY 11967, USA

accelerated thermal degradation test, that is, incubate the protein at 37°C for 48h, and no obvious degradation and precipitation were observed. The loss rate is less than 5% within the expiration date under appropriate storage condition.

Storage

Avoid repeated freeze/thaw cycles. Store at 2-8°C for one month. Aliquot and store at -80°C for 12 months.

Storage buffer

Supplied as lyophilized form in PBS, pH7.4, containing 5% trehalose, 0.01% sarcosyl

Reconstitution

Reconstitute in sterile PBS, pH7.2-pH7.4.

GENE INFORMATION**Gene Name**

C2 complement C2 [*Rattus norvegicus* (Norway rat)]

Official Symbol

C2

Synonyms

C2; complement C2; complement component 2

Gene ID

24231

mRNA Refseq

NM_172222.2

Protein Refseq

NP_757376.2

UniProt ID

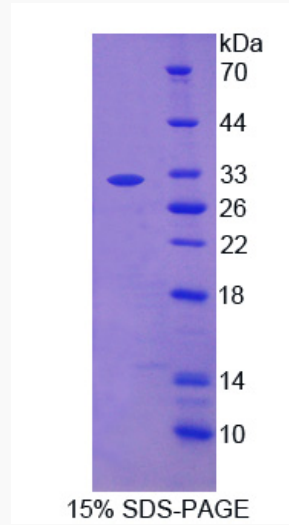
Q6MG73

 Tel: 1-631-559-9269 1-516-512-3133

 Email: info@creative-biomart.com  Fax: 1-631-938-8127

 45-1 Ramsey Road, Shirley, NY 11967, USA

SDS-PAGE



 Tel: 1-631-559-9269 1-516-512-3133

 Email: info@creative-biomart.com  Fax: 1-631-938-8127

 45-1 Ramsey Road, Shirley, NY 11967, USA