

Recombinant Human C21ORF33 Protein (43-268 aa), GST-tagged

Cat. No. C21ORF33-1185H **Lot. No.** (See product label)

SPECIFICATION

Product Overview	Recombinant Human C21ORF33 Protein (43-268 aa) is produced by E. coli expression system. This protein is fused with a GST tag at the N-terminal. Research Area: Metabolism. Protein Description: Full Length of Mature Protein.
Species	Human
Source	E.coli
ProteinLength	43-268 aa
Form	Tris-based buffer,50% glycerol
Molecular Mass	50.9 kDa
AA Sequence	ARVALVLSGCGVYDGTETIHEASAILVHLSRGGAEVQIFAPDVPQMVIDHTKGQPSE GESRNVLTESARIARGKITDLANLSAANHDAAIFFPGGFGAANKLSTFAVDGKDCKVN KEVERVLKEFHQAGKPIGLCCIAPVLAALKVLRGVEVTVGHEQEEGGKWPYAGTAEAI KALGAKHCVKVEVVEAHVDQKNKVVTTPAFMCETALHYIHDGIGAMVRKVLELTGK
Purity	> 90% as determined by SDS-PAGE.
Notes	Repeated freezing and thawing is not recommended. Store working aliquots at 4 centigrade for up to one week.

 Tel: 1-631-559-9269 1-516-512-3133

 Email: info@creative-biomart.com  Fax: 1-631-938-8127

 45-1 Ramsey Road, Shirley, NY 11967, USA

Storage

The shelf life is related to many factors, storage state, buffer ingredients, storage temperature and the stability of the protein itself. Generally, the shelf life of liquid form is 6 months at -20 centigrade/-80 centigrade. The shelf life of lyophilized form is 12 months at -20 centigrade/-80 centigrade.

Concentration

A hardcopy of COA with reconstitution instruction is sent along with the products. Please refer to it for detailed information.

GENE INFORMATION

Gene Name

C21orf33 chromosome 21 open reading frame 33 [Homo sapiens]

Official Symbol

C21ORF33

Synonyms

C21ORF33; D21S2048E; ES1; GT335; HES1; KNP I; KNP Ia; KNPH; KNPI;

Gene ID

8209

mRNA Refseq

NM_004649

Protein Refseq

NP_004640

MIM


601659

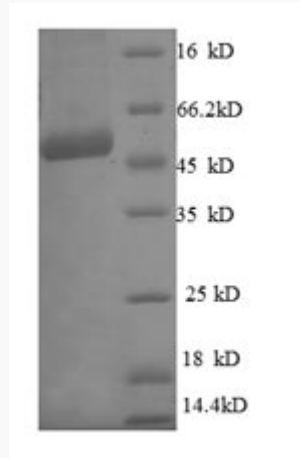
UniProt ID

P30042

 Tel: 1-631-559-9269 1-516-512-3133

 Email: info@creative-biomart.com  Fax: 1-631-938-8127

 45-1 Ramsey Road, Shirley, NY 11967, USA



(Tris-Glycine gel) Discontinuous SDS-PAGE (reduced) with 5% enrichment gel and 15% separation gel.

 Tel: 1-631-559-9269 1-516-512-3133

 Email: info@creative-biomart.com  Fax: 1-631-938-8127

 45-1 Ramsey Road, Shirley, NY 11967, USA