

Recombinant Human C21orf33 protein, GST-tagged

Cat. No. C21orf33-20H Lot. No. (See product label)

SPECIFICATION

Product Overview	Recombinant Human C21orf33(1 a.a. - 268 a.a.) fused with GST tag at N-terminal was expressed in Wheat Germ.
Species	Human
Source	Wheat Germ
ProteinLength	1 a.a. - 268 a.a.
Description	This gene encodes a potential mitochondrial protein that is a member of the DJ-1/Pfpl gene family. This protein is overexpressed in fetal Down syndrome brain. Alternate splicing results in multiple transcript variants.
Form	50 mM Tris-HCl, 10 mM reduced Glutathione, pH=8.0 in the elution buffer.
Molecular Mass	54.5 kDa
AA Sequence	MAAVRALVASRLAAASAFTSLSPGGRTSPQRAALHLSVPRPAARVALVLSGCGVYD GTEIHEASAILVHLSRGGAEVQIFAPDVPQMVIDHTKGGQPSEGESRNVLTESARIAR GKITDLANLSAANHDAIIFPGGFGAANKLSTFAVDGKDCKVNKEVERVLKEFHQAGK PIGLCCIAPVLAQKVLGRGVEVTVGHEQEEGGKWPYAGTAEAIKALGAKHCVKEVVEA HVDQKNKVVTTTAPFMCETALHYIHDGIGAMVRKVLELTGK
Applications	Enzyme-linked Immunoabsorbent Assay; Western Blot (Recombinant protein); Antibody Production; Protein Array

 Tel: 1-631-559-9269 1-516-512-3133

 Email: info@creative-biomart.com  Fax: 1-631-938-8127

 45-1 Ramsey Road, Shirley, NY 11967, USA

Notes Best use within three months from the date of receipt of this protein.

Storage Store at -80 centigrade. Aliquot to avoid repeated freezing and thawing.

GENE INFORMATION

Gene Name C21orf33 chromosome 21 open reading frame 33 [Homo sapiens]

Official Symbol C21orf33

Synonyms C21ORF33; chromosome 21 open reading frame 33; ES1 protein homolog, mitochondrial; D21S2048E; ES1; GT335; HES1; KNP I; KNP Ia; KNPH; KNPI; Keio novel protein I; human HES1 protein, homolog to E.coli and zebrafish ES1 protein;

Gene ID 8209

mRNA Refseq NM_004649

Protein Refseq NP_004640

MIM 601659

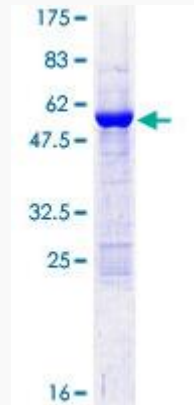
UniProt ID P30042

Chromosome Location 21q22.3

 Tel: 1-631-559-9269 1-516-512-3133

 Email: info@creative-biomart.com  Fax: 1-631-938-8127

 45-1 Ramsey Road, Shirley, NY 11967, USA



 Tel: 1-631-559-9269 1-516-512-3133

 Email: info@creative-biomart.com  Fax: 1-631-938-8127

 45-1 Ramsey Road, Shirley, NY 11967, USA