

## Recombinant Human C2CD3 Protein (Asn1432-Leu1647), N-GST-tagged

Cat. No. C2CD3-0116H Lot. No. (See product label)

### SPECIFICATION

<b>Product Overview</b>	Recombinant human C2CD3 (Asn1432-Leu1647) was fused with the N-GST tag and was expressed in E. coli.
<b>Species</b>	Human
<b>Source</b>	E.coli
<b>ProteinLength</b>	Asn1432-Leu1647
<b>Form</b>	Lyophilized powder/frozen liquid
<b>Molecular Mass</b>	51.24 kDa
<b>Purity</b>	>90% as determined by SDS-PAGE
<b>Notes</b>	For research use only.
<b>Storage</b>	Use a manual defrost freezer and avoid repeated freeze thaw cycles. Store at 2 to 8 centigrade for one week. Store at -20 to -80 centigrade for twelve months from the date of receipt.
<b>Storage Buffer</b>	0.01M PBS, pH 7.4, 0.02% NLS
<b>Reconstitution</b>	Reconstitute in sterile water for a stock solution.

 Tel: 1-631-559-9269 1-516-512-3133

 Email: [info@creative-biomart.com](mailto:info@creative-biomart.com)  Fax: 1-631-938-8127

 45-1 Ramsey Road, Shirley, NY 11967, USA

**Shipping**

They are shipped out with dry ice/blue ice unless customers require otherwise.

**GENE INFORMATION**

**Gene Name** C2CD3 C2 calcium-dependent domain containing 3 [ Homo sapiens (human) ]

**Official Symbol** C2CD3

**Synonyms** C2CD3; C2 domain containing 3 centriole elongation regulator; OFD14; C2 domain-containing protein 3; C2 calcium dependent domain containing 3

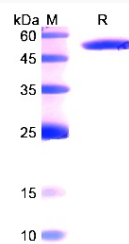
**Gene ID** 26005

**mRNA Refseq** NM\_015531

**Protein Refseq** NP\_056346

**MIM** 615944

**UniProt ID** Q4AC94

**SDS-PAGE**


 Tel: 1-631-559-9269 1-516-512-3133

 Email: [info@creative-biomart.com](mailto:info@creative-biomart.com)  Fax: 1-631-938-8127

 45-1 Ramsey Road, Shirley, NY 11967, USA