

Recombinant Human C2CD3 protein, His & GST-tagged

Cat. No. C2CD3-1575H Lot. No. (See product label)

SPECIFICATION

| | |
|-------------------------|--|
| Product Overview | Recombinant Human C2CD3 aa. (Asn1432~Leu1647 (Accession # Q4AC94)) fused with N-terminal His & GST tag was produced in E. coli cells. |
| Species | Human |
| Source | E.coli |
| ProteinLength | Asn1432~Leu1647 |
| Description | This gene encodes a protein that functions as a regulator of centriole elongation. Studies of the orthologous mouse protein show that it promotes centriolar distal appendage assembly and is also required for the recruitment of other ciliogenic proteins, including intraflagellar transport proteins. Mutations in this gene cause orofacioidigital syndrome XIV (OFD14), a ciliopathy resulting in malformations of the oral cavity, face and digits. Alternative splicing of this gene results in multiple transcript variants. |
| Form | Freeze-dried powder |
| Molecular Mass | Predicted Molecular Mass: 56.8kDa |
| Endotoxin | <1.0EU per 1ug (determined by the LAL method) |
| Purity | >95% |

 Tel: 1-631-559-9269 1-516-512-3133

 Email: info@creative-biomart.com  Fax: 1-631-938-8127

 45-1 Ramsey Road, Shirley, NY 11967, USA

| | |
|--------------------------|---|
| Applications | SDS-PAGE; WB; ELISA; IP. |
| Stability | The thermal stability is described by the loss rate. The loss rate was determined by accelerated thermal degradation test, that is, incubate the protein at 37°C for 48h, and no obvious degradation and precipitation were observed. The loss rate is less than 5% within the expiration date under appropriate storage condition. |
| Storage | Avoid repeated freeze/thaw cycles. Store at 2-8°C for one month. Aliquot and store at -80°C for 12 months. |
| Storage buffer | Supplied as lyophilized form in PBS, pH7.4, containing 5% sucrose, 0.01% sarcosyl. |
| Reconstitution | Reconstitute in sterile PBS, pH7.2-pH7.4. |
| Isoelectric Point | 6.5 |

GENE INFORMATION

| | |
|------------------------|--|
| Gene Name | C2 calcium dependent domain containing 3 |
| Official Symbol | C2CD3 |
| Synonyms | C2CD3; C2 calcium dependent domain containing 3; OFD14; C2 domain-containing protein 3 |
| Gene ID | 26005 |
| mRNA Refseq | NM_001286577.1 |
| Protein Refseq | NP_001273506.1 |

 Tel: 1-631-559-9269 1-516-512-3133

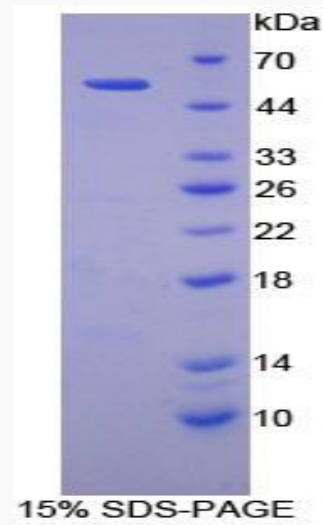
 Email: info@creative-biomart.com  Fax: 1-631-938-8127

 45-1 Ramsey Road, Shirley, NY 11967, USA

UniProt ID

Q4AC94

SDS-PAGE



 Tel: 1-631-559-9269 1-516-512-3133

 Email: info@creative-biomart.com  Fax: 1-631-938-8127

 45-1 Ramsey Road, Shirley, NY 11967, USA