

Recombinant Human C2orf62 Protein, GST-tagged

Cat. No. C2orf62-5294H **Lot. No.** (See product label)

SPECIFICATION

Product Overview	Human MGC50811 full-length ORF (AAH52750, 1 a.a. - 387 a.a.) recombinant protein with GST-tag at N-terminal.
Species	Human
Source	Wheat Germ
Description	CATIP (Ciliogenesis Associated TTC17 Interacting Protein) is a Protein Coding gene. GO annotations related to this gene include calmodulin binding.
Molecular Mass	68.31 kDa
AA Sequence	MSSKVYSTGSRAKDHQPSGPECLPLPEANAEAIDFLSSLHKEELQMLFFSETLAMVS DTGEPQGELTIEVQRGKYQEKLGMCLTYCLFVHASSRGFLDKMLCGNSLLGYLSEKL ELMEQHSQDFIKFLILPMEKMSLLKQDDQLAVTRSIKEGEEVKGTVTSFPWSSIKGF ISEAANLVLLRVMWRRMVPSNARFLTLDTGKLCYLTYNLGFQTIQVDHQQAQEVF IVEQTVHAEEGIPMSCQYYLLSDGHLAKRIQVGSPPGCCITKMPILREDEIEPRPVFE KKPLVWEEDMELYSKFLDRKEELRLGHASYLRQHPEAHALISDFLLFLLLRQPEDVV TFAAEFFGPFDPWRPSSPALGSSHRPNPFRSLEPEGDARSGAA
Applications	Enzyme-linked Immunoabsorbent Assay Western Blot (Recombinant protein) Antibody Production Protein Array

 Tel: 1-631-559-9269 1-516-512-3133

 Email: info@creative-biomart.com  Fax: 1-631-938-8127

 45-1 Ramsey Road, Shirley, NY 11967, USA

Notes	Best use within three months from the date of receipt of this protein.
Storage	Store at -80 centigrade. Aliquot to avoid repeated freezing and thawing.
Storage Buffer	50 mM Tris-HCl, 10 mM reduced Glutathione, pH=8.0 in the elution buffer.

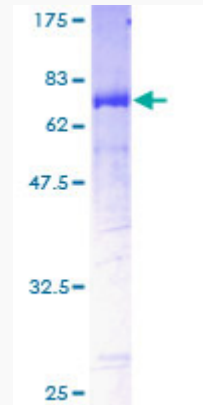
GENE INFORMATION

Gene Name	C2orf62 chromosome 2 open reading frame 62 [Homo sapiens]
Official Symbol	C2orf62
Synonyms	C2ORF62; chromosome 2 open reading frame 62; uncharacterized protein C2orf62; MGC50811;
Gene ID	375307
mRNA Refseq	NM_198559
Protein Refseq	NP_940961
UniProt ID	Q7Z7H3

 Tel: 1-631-559-9269 1-516-512-3133

 Email: info@creative-biomart.com  Fax: 1-631-938-8127

 45-1 Ramsey Road, Shirley, NY 11967, USA



Quality Control

Testing:

12.5% SDS-PAGE Stained with Coomassie Blue.

 Tel: 1-631-559-9269 1-516-512-3133

 Email: info@creative-biomart.com  Fax: 1-631-938-8127

 45-1 Ramsey Road, Shirley, NY 11967, USA