

Active Native *C. botulinum* C3 Enzyme

Cat. No. C3-001C Lot. No. (See product label)

SPECIFICATION

Product Overview	This product was highly purified from the supernatant of the culture of <i>Clostridium botulinum</i> type C by cation exchange, hydroxyapatite and gel filtration columns.
Species	<i>C.botulinum</i>
Source	<i>C. botulinum</i>
Description	This toxin ADP-ribosylates Rho and Rac, which are low-molecular weight GTP-binding proteins of animal cells, and interrupts the downstream signal transduction pathways.
Form	1.33 mg/ml in 5 mM sodium phosphate buffer (pH 6.0), 50% glycerol
Bio-activity	Stimulation of human keratinocytes in culture was observed at 50 ng/ml. No toxic effect was observed in two mice injected with 5 ug of C3 enzyme, showing little contamination of lethal neurotoxins from the botulinus culuture in this preparation.
Molecular Mass	24kDa
Purity	More than 90 % purity by SDS-PAGE (CBB staining)
Applications	1) For the studies on the Rho-dependent signaling pathways in animal cells in vivo and in vitro. 2) ADP-ribosylation of small GTP proteins, such as Rho and Rac proteins.

 Tel: 1-631-559-9269 1-516-512-3133

 Email: info@creative-biomart.com  Fax: 1-631-938-8127

 45-1 Ramsey Road, Shirley, NY 11967, USA

Storage Ship at 4centigrade or -20centigrade and store at -20centigrade (-80centigrade for long-term storage).

Warning It should be handled carefully. Avoid mouth pipetting. Wear protective gloves on handling the toxin. Avoid contact with open wounds. Wash thoroughly any area of the body that makes contact with the toxin.

GENE INFORMATION

Gene Name Mono-ADP-ribosyltransferase C3 [Clostridium botulinum BKT015925]

Official Symbol CBC4_RS13695

Synonyms CBC4_RS13695; mono-ADP-ribosyltransferase C3; C3; C3 enzyme

Gene ID 29748288

Protein Refseq WP_013720927.1

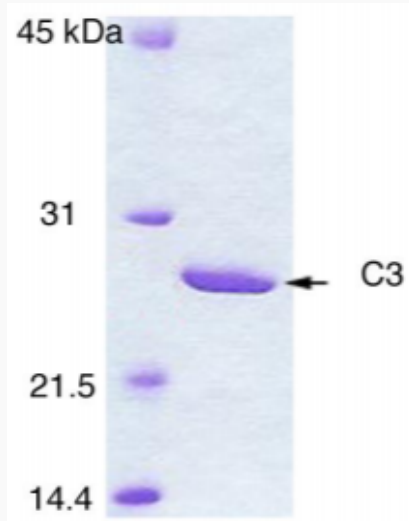
UniProt ID P15879

 Tel: 1-631-559-9269 1-516-512-3133

 Email: info@creative-biomart.com  Fax: 1-631-938-8127

 45-1 Ramsey Road, Shirley, NY 11967, USA

Polyacrylamide gel
electrophoresis of
C3 enzyme



 Tel: 1-631-559-9269 1-516-512-3133

 Email: info@creative-biomart.com  Fax: 1-631-938-8127

 45-1 Ramsey Road, Shirley, NY 11967, USA