

Recombinant Human C3 Protein, Myc/DDK-tagged, C13 and N15-labeled

Cat. No. C3-3052H **Lot. No.** (See product label)

SPECIFICATION

Product Overview	C3 MS Standard C13 and N15-labeled recombinant protein (NP_000055) with a C-terminal MYC/DDK tag, was expressed in HEK293 cells.
Species	Human
Source	HEK293
Description	Complement component C3 plays a central role in the activation of complement system. Its activation is required for both classical and alternative complement activation pathways. The encoded preproprotein is proteolytically processed to generate alpha and beta subunits that form the mature protein, which is then further processed to generate numerous peptide products. The C3a peptide, also known as the C3a anaphylatoxin, modulates inflammation and possesses antimicrobial activity. Mutations in this gene are associated with atypical hemolytic uremic syndrome and age-related macular degeneration in human patients.
Molecular Mass	187 kDa
AA Sequence	MGPTSGPSLLLLLLTHLPLALGSPMYSIITPNILRLESEETMVLEAHDAQGDVPVTVTV HDFPGKKLVLSSEKTVLTPATNHMGNVFTTIPANREFKSEKGRNKFVTVQATFGTQV VEKVVLVSLQSGYLFIQTDKTIYTPGSTVLYRIFTVNHKLLPVGRTVMVNIENPEGIPV KQDSLSSQNQLGVLPLSWDIPELVNMGQWKIRAYYENSPQQVFSTEFVKEYVLPS FEVIVEPTEKFYYIYNEKGLEVTITARFLYGKKVEGTAFVIFGIQDGEQRISLPESLKRI

 Tel: 1-631-559-9269 1-516-512-3133

 Email: info@creative-biomart.com  Fax: 1-631-938-8127

 45-1 Ramsey Road, Shirley, NY 11967, USA

PIEDGSGEVVLSRKVLLDGVQNLRAEDLVGKSLYVSATVILHSGSDMVQAERSGIPIV
TSPYQIHFTKTPKYFKPGMPFDLMVFVTNPDGSPAYRVPVAVQGEDTVQSLTQGDG
VAKLSINTHPSQKPLSITVVRTKKQELSEAEQATRMTQALPYSTVGNSSNNYLHLSVLRT
ELRPGETLNVNFLLRMDRAHEAKIRYYTYLIMNKGRLKAGRQVREPGQDLVVLPLSI
TTDFIPSFRLVAYYTLIGASGQREVVADSVWVDVKDSCVGSLLVKSQSEDRQPVP
GQQMTLKIEGDHGARVVLVAVDKGVFVLNKKNKLTQSKIWDVVEKADIGCTPGSGK
DYAGVFSDAGLTFTSSSGQQTAAQRAELQCPQPAARRRRSVQLTEKRMDKVGKYPK
ELRKCCEDGMRENPMRFSCQRRTFISLGEACKKVFLLDCCNYITELRRQHARASHL
GLARSNLDEIIAENIVSRSEFPESWLWNVEDLKEPPKNGISTKLMNIFLKDSITTWE
ILAVSMSDKKGICVADPFEVTVMQDFIDLRLPYSVVRNEQVEIRAVLYNYRQNQELK
VRVELLHNPAFCSLATTKRRHQQTVTIPPKSSLSVPYVIVPLKTGLQEVEVKAAYVHH
FISDGVRSKLVVPEGIRMNKTVAVRTLDPERLGGREGVQKEDIPPADLSDQVPDTE
ETRILLQGTPVAQMTEDAVERLKHIVTPSGCGEQNMIGMTPTVIAVHYLDETEQ
WEKFGLEKRQGALELIKGYTQQLAFRQPSSAFAAFVKRAPSTWLTAYVVKVFLAV
NLIADSQVLCGAVKWLILEKQKPDGVFQEDAPVIHQEMIGGLRNNNEKDMALTAFVL
ISLQEAKDICEEQVNSLPGSITKAGDFLEANYMNLQRSYTVAIAGYALAQMGRKLGPL
LNKFLTTAKDKNRWEDPGKQLYNVEATSYALLALLQLKDFDFVPPVVRWLNEQRY
GGGYGSTQATFMVFQALAQYQKDAPDHQELNLDVSLQLPSRSSKITHRIHWESASL
LRSEETKENEGFTVTAEGKGQGTLSVVTMYHAKAKDQLTCNKFDLKVTIKAPETEK
RPQDAKNTMILEICTRYRGDQDATMSILDISMMTGAFPTDDDLKQLANGVDRIYSKY
ELDKAFSDRNTLIYLDKVSHEDDCLAFKVHQYFNVELIQPGAVKVYAYYNLEESCT
RFYHPEKEDGKLNKLCRDELRCRCAEENCFIQKSDDKVTLEERLDKACEPGVDYVYK
TRLVKVQLSNDFDEYIMAIEQTIKSGSDEVQVGQRTFISPIKCREALKLEEKHYLM
WGLSSDFWGEKPNLSYIIGKDTWVEHWPEEDECQDEENQKQCQDLGAFTESMVVF
GCPNTRTRPLEQKLISEEDLAANDILDYKDDDDKV

Purity > 80% as determined by SDS-PAGE and Coomassie blue staining

Stability Stable for 3 months from receipt of products under proper storage and handling conditions.

 Tel: 1-631-559-9269 1-516-512-3133

 Email: info@creative-biomart.com  Fax: 1-631-938-8127

 45-1 Ramsey Road, Shirley, NY 11967, USA

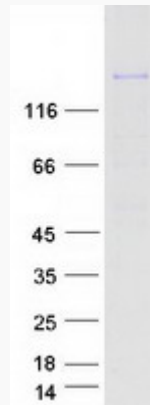
Storage	Store at -80 centigrade. Avoid repeated freeze-thaw cycles.
Concentration	50 µg/mL as determined by BCA
Storage Buffer	100 mM glycine, 25 mM Tris-HCl, pH 7.3.
GENE INFORMATION	
Gene Name	C3 complement component 3 [Homo sapiens (human)]
Official Symbol	C3
Synonyms	C3; complement component 3; complement C3; CPAMD1; complement component C3; acylation-stimulating protein cleavage product; C3 and PZP-like alpha-2-macroglobulin domain-containing protein 1; ASP; AHUS5; ARMD9;
Gene ID	718
mRNA Refseq	NM_000064
Protein Refseq	NP_000055
MIM	120700
UniProt ID	P01024

 Tel: 1-631-559-9269 1-516-512-3133

 Email: info@creative-biomart.com  Fax: 1-631-938-8127

 45-1 Ramsey Road, Shirley, NY 11967, USA

SDS-PAGE



 Tel: 1-631-559-9269 1-516-512-3133

 Email: info@creative-biomart.com  Fax: 1-631-938-8127

 45-1 Ramsey Road, Shirley, NY 11967, USA