

Recombinant Cattle C3 Protein, His-tagged

Cat. No. C3-338C Lot. No. (See product label)

SPECIFICATION

Product Overview	Recombinant Cattle C3 Protein (Gly448-Thr665) with N-His tag was expressed in E. coli.
Species	Cattle
Source	E.coli
ProteinLength	Gly448-Thr665
Description	C3 plays a central role in the activation of the complement system. Its processing by C3 convertase is the central reaction in both classical and alternative complement pathways. After activation C3b can bind covalently, via its reactive thioester, to cell surface carbohydrates or immune aggregates.
Form	Freeze-dried powder
Molecular Mass	Predicted Molecular Mass: 27.8 kDa Accurate Molecular Mass: 31 kDa
Purity	> 90%
Applications	Positive Control; Immunogen; SDS-PAGE; WB.
Stability	The thermal stability is described by the loss rate. The loss rate was determined by accelerated thermal degradation test, that is, incubate the protein at 37 centigrade for

 Tel: 1-631-559-9269 1-516-512-3133

 Email: info@creative-biomart.com  Fax: 1-631-938-8127

 45-1 Ramsey Road, Shirley, NY 11967, USA

48h, and no obvious degradation and precipitation were observed. The loss rate is less than 5% within the expiration date under appropriate storage condition.

Storage

Avoid repeated freeze/thaw cycles. Store at 2-8 centigrade for one month. Aliquot and store at -80 centigrade for 12 months.

Storage Buffer

PBS, pH7.4, containing 0.01% SKL, 1 mM DTT, 5% Trehalose and Proclin300.

Reconstitution

Reconstitute in sterile water to a concentration of 0.1-1.0 mg/mL. Do not vortex.

GENE INFORMATION

Gene Name

C3 complement C3 [*Bos taurus* (cattle)]

Official Symbol

C3

Synonyms

C3; complement C3; complement C3; complement component 3; EC 3.4.21.43

Gene ID

280677

mRNA Refseq

NM_001040469

Protein Refseq

NP_001035559

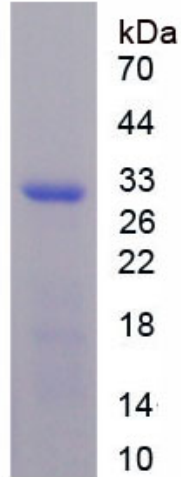
UniProt ID

Q2UVX4

 Tel: 1-631-559-9269 1-516-512-3133

 Email: info@creative-biomart.com  Fax: 1-631-938-8127

 45-1 Ramsey Road, Shirley, NY 11967, USA



Tel: 1-631-559-9269 1-516-512-3133

Email: info@creative-biomart.com Fax: 1-631-938-8127

45-1 Ramsey Road, Shirley, NY 11967, USA