

Active Recombinant Human C3 protein, His-GST-tagged

Cat. No. C3-5613H Lot. No. (See product label)

SPECIFICATION

Product Overview	Active Recombinant Human C3 protein(P01024)(672~748 aa), fused with N-terminal His tag and GST tag, was expressed in E.coli.
Species	Human
Source	E.coli
ProteinLength	672-748 aa
Form	Lyophilized from sterile PBS, pH7.4, containing 0.01% SKL, 1mM DTT, 5% Trehalose and Proclin300.
Bio-activity	<p>Complement Component 3a (C3a) is a component of the complement system, this protein is also known as the C3a anaphylatoxin, modulates inflammation and possesses antimicrobial activity. It's been identified that C3A can interact with Complement Factor I (CFI), thus a functional binding ELISA assay was conducted to detect the interaction of recombinant human C3a and recombinant human CFI. Briefly, C3a was diluted serially in PBS with 0.01% BSA (pH 7.4). Duplicate samples of 100 µl were then transferred to CFI-coated microtiter wells and incubated for 1h at 37°C. Wells were washed with PBST and incubated for 1h with anti-C3a pAb, then aspirated and washed 3 times. After incubation with HRP labelled secondary antibody for 1h at 37°C, wells were aspirated and washed 5 times. With the addition of substrate solution, wells were incubated 15-25 minutes at 37°C. Finally, add 50 µ stop solution to the wells and read at 450/630 nm immediately. The binding activity of</p>

 Tel: 1-631-559-9269 1-516-512-3133

 Email: info@creative-biomart.com  Fax: 1-631-938-8127

 45-1 Ramsey Road, Shirley, NY 11967, USA

recombinant human C3a and recombinant human CFI was shown, the EC50 for this effect is 0.03 ug/mL.

Molecular Mass	39.0kDa
Endotoxin	<1.0EU per 1µg (determined by the LAL method).
Purity	> 95% as determined by SDS-PAGE.
Storage	Avoid repeated freeze/thaw cycles. Store at -20°C for 12 months. Aliquot and store at -80°C for 12 months.
Reconstitution	Reconstitute in 10mM PBS (pH7.4) to a concentration of 0.1-1.0 mg/mL. Do not vortex.

GENE INFORMATION

Gene Name	C3 complement component 3 [Homo sapiens]
Official Symbol	C3
Synonyms	C3; complement component 3; complement C3; CPAMD1; complement component C3; acylation-stimulating protein cleavage product; C3 and PZP-like alpha-2-macroglobulin domain-containing protein 1; ASP; AHUS5; ARMD9;
Gene ID	718
mRNA Refseq	NM_000064
Protein Refseq	NP_000055

 Tel: 1-631-559-9269 1-516-512-3133

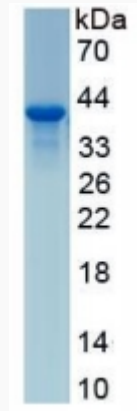
 Email: info@creative-biomart.com  Fax: 1-631-938-8127

 45-1 Ramsey Road, Shirley, NY 11967, USA

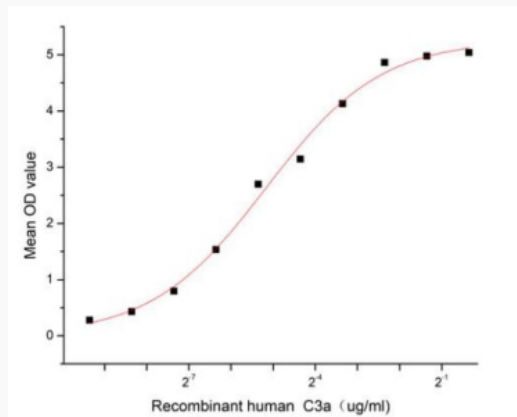
MIM 120700

UniProt ID P01024

SDS-PAGE



Activity



 Tel: 1-631-559-9269 1-516-512-3133

 Email: info@creative-biomart.com  Fax: 1-631-938-8127

 45-1 Ramsey Road, Shirley, NY 11967, USA