

Recombinant Human C3AR1 protein, His-tagged

Cat. No. C3AR1-3499H Lot. No. (See product label)

SPECIFICATION

Product Overview	Recombinant Human C3AR1 protein(165-330 aa), fused with N-terminal His tag, was expressed in E.coli.
Species	Human
Source	E.coli
ProteinLength	165-330 aa
Form	The purified protein was lyophilized from sterile phosphate-buffered saline (PBS: 58 mM Na ₂ HPO ₄ , 17 mM NaH ₂ PO ₄ , 68 mM NaCl, pH 7.4). Prior to lyophilization, 5% (w/v) trehalose and 5% (w/v) mannitol were incorporated as cryoprotective excipients. The protein was eluted with a buffer containing 300 mM imidazole.
AASequence	TTDNHNRCGYKFGLSLSDYPDFYGDPLENRSLENIVQPPGEMNDRDPSSFQTND HPWTVPTVFQPQTFQRPSADSLPRGSARLTSQNLYSNVFKPADVVSPKIPSGFPIED HETSPLDNSDAFLSTHLKLFPSASSNSFYESELPQGFQDYYNLGGFTDDDQVP
Purity	85%, by SDS-PAGE with Coomassie Brilliant Blue staining.
Storage	Store at 2-8°C for 1-2 weeks. Aliquot and store at -20°C to -80°C for up to 3 months, reconstitution with sterile water and addition of an equal volume of glycerol. Avoid repeat freeze-thaw cycles.
Reconstitution	Dissolve the product in 200 µl sterile water to achieve a working concentration of 0.25

 Tel: 1-631-559-9269 1-516-512-3133

 Email: info@creative-biomart.com  Fax: 1-631-938-8127

 45-1 Ramsey Road, Shirley, NY 11967, USA

g/μl. If experimental compatibility allows, mix the aqueous solution with an equal volume of glycerol (1:1 ratio) after initial reconstitution.

GENE INFORMATION

Gene Name	C3AR1 complement component 3a receptor 1 [Homo sapiens]
Official Symbol	C3AR1
Synonyms	C3AR1; complement component 3a receptor 1; C3a anaphylatoxin chemotactic receptor; AZ3B; C3AR; C3a-R; complement component 3 receptor 1; HNFAG09;
Gene ID	719
mRNA Refseq	NM_004054
Protein Refseq	NP_004045
MIM	605246
UniProt ID	Q16581

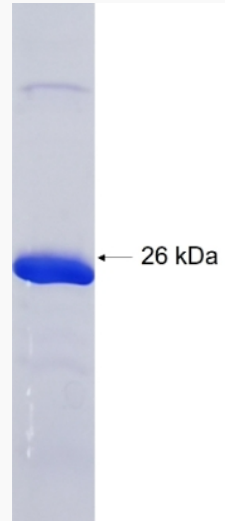
 Tel: 1-631-559-9269 1-516-512-3133

 Email: info@creative-biomart.com  Fax: 1-631-938-8127

 45-1 Ramsey Road, Shirley, NY 11967, USA



SDS-PAGE



Tel: 1-631-559-9269 1-516-512-3133

Email: info@creative-biomart.com Fax: 1-631-938-8127

45-1 Ramsey Road, Shirley, NY 11967, USA