

# Recombinant Full Length Human C3AR1 Protein, C-Flag-tagged

**Cat. No.** C3AR1-694HFL    **Lot. No.** (See product label)

## SPECIFICATION

<b>Product Overview</b>	Recombinant Full Length Human C3AR1 Protein, fused to Flag-tag at C-terminus, was expressed in Mammalian cells.
<b>Species</b>	Human
<b>Source</b>	Mammalian Cells
<b>Description</b>	C3a is an anaphylatoxin released during activation of the complement system. The protein encoded by this gene is an orphan G protein-coupled receptor for C3a. Binding of C3a by the encoded receptor activates chemotaxis, granule enzyme release, superoxide anion production, and bacterial opsonization.
<b>Form</b>	25 mM Tris HCl, pH 7.3, 100 mM glycine, 10% glycerol.
<b>Molecular Mass</b>	53.7 kDa
<b>AA Sequence</b>	MASFSAETNSTDLLSQPWNEPPVILSMVILSLTFLLGLPGNGLVLWVAGLKMQRVTN TIWFLHLTLADLL CCLSLPFSLAHLALQGQWPYGRFLCKLIPSIIVLNMFASVFLLTAIS LDRCLVVKPIWCQNHRNVGMAC SICGCIWVVAFVMCIPVFVYREIFTTDNHNRCG YKFGLSSSLDPDFYGDPLENRSLENIVQPPGEMNDR LDPSSFQTNDHPWTVPTVF QPQTFQRPSADSLPRGSARLTSQNLVSNVFKPADVVSPKIPSGFPIEDHET SPLDNS DAFLSTHLKLFPSASSNSFYESELPQGFQDYYNLQGFTDDDQVPTPLVAITITRLVVG FLLPSV IMIACYSFIVFRMQRGRFAKSQSKTFRVAVVVVAVFLVCWTPYHIFGVLSLL TDPETPLGKTLMSWDHVC

 Tel: 1-631-559-9269    1-516-512-3133

 Email: [info@creative-biomart.com](mailto:info@creative-biomart.com)     Fax: 1-631-938-8127

 45-1 Ramsey Road, Shirley, NY 11967, USA

IALASANSCFNPFYALLGKDFRKKARQSIQGILEAAFSEELTRSTHCPSNNVISERNS  
TTVTRTRPLEQKLISEEDLAANDILDYKDDDDKV

<b>Purity</b>	> 80% as determined by SDS-PAGE and Coomassie blue staining.
<b>Stability</b>	Stable for 12 months from the date of receipt of the product under proper storage and handling conditions. Avoid repeated freeze-thaw cycles.
<b>Storage</b>	Store at -80 centigrade.
<b>Concentration</b>	>50 ug/mL as determined by microplate BCA method.
<b>Preparation</b>	Recombinant protein was captured through anti-DDK affinity column followed by conventional chromatography steps.
<b>Protein Families</b>	Druggable Genome, GPCR, Transmembrane
<b>Protein Pathways</b>	Complement and coagulation cascades, Neuroactive ligand-receptor interaction
<b>Full Length</b>	Full L.

## GENE INFORMATION

<b>Gene Name</b>	C3AR1 complement C3a receptor 1 [ Homo sapiens (human) ]
<b>Official Symbol</b>	C3AR1
<b>Synonyms</b>	AZ3B; C3AR; HNFAG09
<b>Gene ID</b>	719

 Tel: 1-631-559-9269 1-516-512-3133

 Email: [info@creative-biomart.com](mailto:info@creative-biomart.com)  Fax: 1-631-938-8127

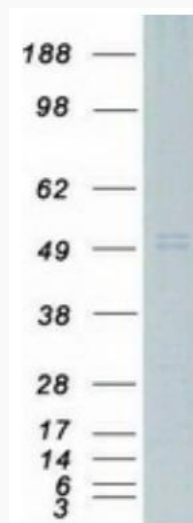
 45-1 Ramsey Road, Shirley, NY 11967, USA

mRNA Refseq [NM\\_004054.4](#)

Protein Refseq [NP\\_004045.1](#)

MIM [605246](#)

UniProt ID [Q16581](#)



Coomassie blue staining of purified C3AR1 protein.

 Tel: 1-631-559-9269 1-516-512-3133

 Email: [info@creative-biomart.com](mailto:info@creative-biomart.com)  Fax: 1-631-938-8127

 45-1 Ramsey Road, Shirley, NY 11967, USA