

Recombinant Human C3orf38 Protein, GST-Tagged

Cat. No. C3orf38-0031H Lot. No. (See product label)

SPECIFICATION

Product Overview	Human C3orf38 full-length ORF (NP_776185.1, 1 a.a. - 327 a.a.) recombinant protein with GST-tag at N-terminal.
Species	Human
Source	Wheat Germ
Description	C3orf38 (Chromosome 3 Open Reading Frame 38) is a Protein Coding gene.
Molecular Mass	63.7 kDa
AA Sequence	MSGLSFSEMEGCRNLLGLLDNDEIMALCDVTNRLVQPQDRQDAVHAILAYSQSAE ELLRRRKVHREVIFKYLATQGIVIPPATEKHNLIQHAKDYWQKQPQLKCLKETPEPVTK TEDIHLFQQQVKEDKKAEKVDFRRLGEEFCHWFFGLLNSQNPFLGPPQDEWGPQH FWHDVKLRFYYNTSEQNVM DYHGAEIVSLRLLSLVKEEFLFLSPNLDSHGLKCASSP HGLVMVGVAGTVHRGNTCLGIFEQIFGLIRCPFVENTWKIKFINLKIMGESSLAPGTLF KPSVKFEQSDLEAFYNVITVCGTNEVRHNVKQASDSGTGDQV
Applications	Enzyme-linked Immunoabsorbent Assay Western Blot (Recombinant protein) Antibody Production Protein Array
Notes	Best use within three months from the date of receipt of this protein.

 Tel: 1-631-559-9269 1-516-512-3133

 Email: info@creative-biomart.com  Fax: 1-631-938-8127

 45-1 Ramsey Road, Shirley, NY 11967, USA

Storage Store at -80 centigrade. Aliquot to avoid repeated freezing and thawing.

Storage Buffer 50 mM Tris-HCl, 10 mM reduced Glutathione, pH=8.0 in the elution buffer.

GENE INFORMATION

Gene Name C3orf38 chromosome 3 open reading frame 38 [Homo sapiens]

Official Symbol C3orf38

Synonyms C3ORF38; chromosome 3 open reading frame 38; uncharacterized protein C3orf38; MGC26717; FLJ54270;

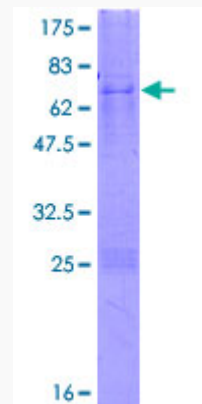
Gene ID 285237

mRNA Refseq NM_173824

Protein Refseq NP_776185

UniProt ID Q5JPI3

Quality Control Testing



 Tel: 1-631-559-9269 1-516-512-3133

 Email: info@creative-biomart.com  Fax: 1-631-938-8127

 45-1 Ramsey Road, Shirley, NY 11967, USA



12.5% SDS-PAGE Stained with Coomassie Blue.

 Tel: 1-631-559-9269 1-516-512-3133

 Email: info@creative-biomart.com  Fax: 1-631-938-8127

 45-1 Ramsey Road, Shirley, NY 11967, USA