

Recombinant Human C4A Protein, GST-Tagged

Cat. No. C4A-0050H **Lot. No.** (See product label)

SPECIFICATION

Product Overview	Human C4A partial ORF (AAH63289, 61 a.a. - 170 a.a.) recombinant protein with GST-tag at N-terminal.
Species	Human
Source	Wheat Germ
Description	<p>This gene encodes the acidic form of complement factor 4, part of the classical activation pathway. The protein is expressed as a single chain precursor which is proteolytically cleaved into a trimer of alpha, beta, and gamma chains prior to secretion. The trimer provides a surface for interaction between the antigen-antibody complex and other complement components. The alpha chain is cleaved to release C4 anaphylatoxin, an antimicrobial peptide and a mediator of local inflammation. Deficiency of this protein is associated with systemic lupus erythematosus and type I diabetes mellitus. This gene localizes to the major histocompatibility complex (MHC) class III region on chromosome 6. Varying haplotypes of this gene cluster exist, such that individuals may have 1, 2, or 3 copies of this gene. Two transcript variants encoding different isoforms have been found for this gene. [provided by RefSeq, Nov 2014]</p>
Molecular Mass	37.84 kDa
AA Sequence	PSRNNVPCSPKVDFTLSSERDFALLSLQVPLKDAKSCGLHQLLRGPEVQLVAHSPW LKDSLSRTTNIQGINLLFSSRRGHLFLQTDQPIYNPGQVRVYRVFALDQKMRPS

 Tel: 1-631-559-9269 1-516-512-3133

 Email: info@creative-biomart.com  Fax: 1-631-938-8127

 45-1 Ramsey Road, Shirley, NY 11967, USA

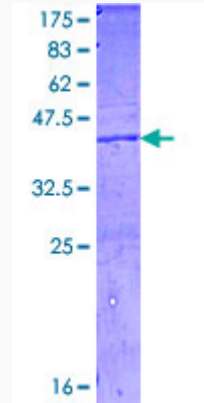
Applications	Enzyme-linked Immunoabsorbent Assay Western Blot (Recombinant protein) Antibody Production Protein Array
Notes	Best use within three months from the date of receipt of this protein.
Storage	Store at -80 centigrade. Aliquot to avoid repeated freezing and thawing.
Storage Buffer	50 mM Tris-HCl, 10 mM reduced Glutathione, pH=8.0 in the elution buffer.
GENE INFORMATION	
Gene Name	C4A complement component 4A (Rodgers blood group) [Homo sapiens]
Official Symbol	C4A
Synonyms	C4A; complement component 4A (Rodgers blood group); complement component 4A; complement C4-A; C4; C4A2; C4A3; C4A4; C4A6; C4B; C4S; CO4; CPAMD2; RG; acidic C4; C4A anaphylatoxin; Rodgers form of C4; acidic complement C4; C3 and PZP-like alpha-2-macroglobulin domain-containing protein 2; C4AD; MGC164979;
Gene ID	720
mRNA Refseq	NM_001252204
Protein Refseq	NP_001239133
MIM	120810
UniProt ID	P0C0L4

 Tel: 1-631-559-9269 1-516-512-3133

 Email: info@creative-biomart.com  Fax: 1-631-938-8127

 45-1 Ramsey Road, Shirley, NY 11967, USA

**Quality Control
Testing**



12.5% SDS-PAGE Stained with Coomassie Blue.

 Tel: 1-631-559-9269 1-516-512-3133

 Email: info@creative-biomart.com  Fax: 1-631-938-8127

 45-1 Ramsey Road, Shirley, NY 11967, USA