

## Recombinant Human C4A Protein (Asn680-Arg756), N-His-tagged

**Cat. No.** C4A-0345H    **Lot. No.** (See product label)

### SPECIFICATION

<b>Product Overview</b>	Recombinant human C4A (Asn680-Arg756) was fused with the N-His tag and was expressed in E. coli.
<b>Species</b>	Human
<b>Source</b>	E.coli
<b>ProteinLength</b>	Asn680-Arg756
<b>Form</b>	Lyophilized powder/frozen liquid
<b>Molecular Mass</b>	11.07 kDa
<b>Purity</b>	>90% as determined by SDS-PAGE
<b>Notes</b>	For research use only.
<b>Storage</b>	Use a manual defrost freezer and avoid repeated freeze thaw cycles. Store at 2 to 8 centigrade for one week. Store at -20 to -80 centigrade for twelve months from the date of receipt.
<b>Storage Buffer</b>	0.01M PBS, pH 7.4, 0.02% NLS
<b>Reconstitution</b>	Reconstitute in sterile water for a stock solution.

 Tel: 1-631-559-9269    1-516-512-3133

 Email: [info@creative-biomart.com](mailto:info@creative-biomart.com)     Fax: 1-631-938-8127

 45-1 Ramsey Road, Shirley, NY 11967, USA

**Shipping** They are shipped out with dry ice/blue ice unless customers require otherwise.

## GENE INFORMATION

**Gene Name** C4A complement component 4A (Rodgers blood group) [ Homo sapiens (human) ]

**Official Symbol** C4A

**Synonyms** C4A; complement component 4A (Rodgers blood group); complement component 4A; complement C4-A; C4; C4A2; C4A3; C4A4; C4A6; C4B; C4S; CO4; CPAMD2; RG; acidic C4; C4A anaphylatoxin; Rodgers form of C4; acidic complement C4; C3 and PZP-like alpha-2-macroglobulin domain-containing protein 2; C4AD; MGC164979;

**Gene ID** 720

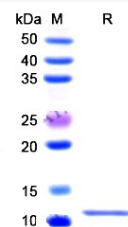
**mRNA Refseq** NM\_001252204

**Protein Refseq** NP\_001239133

**MIM** 120810

**UniProt ID** P0C0L4

### SDS-PAGE



Tel: 1-631-559-9269 1-516-512-3133

Email: [info@creative-biomart.com](mailto:info@creative-biomart.com) Fax: 1-631-938-8127

45-1 Ramsey Road, Shirley, NY 11967, USA