

Active Recombinant Human C4A protein, His-GST-tagged

Cat. No. C4A-566H Lot. No. (See product label)

SPECIFICATION

Product Overview	Active Recombinant Human C4A protein(P0C0L5)(680~756 aa), fused with N-terminal His tag and GST tag, was expressed in E.coli.
Species	Human
Source	E.coli
ProteinLength	680-756 aa
Form	Lyophilized from sterile PBS, pH7.4, containing 0.01% SKL, 1mM DTT, 5% Trehalose and Proclin300.
Bio-activity	<p>Complement Component 4a (C4a) is a component of the complement system, which is a cleavage product of the complement C4 protein. C4a has been implicated in various inflammatory and immune responses. It acts as a chemoattractant, recruiting immune cells such as neutrophils and macrophages to the site of inflammation. Additionally, C4a can stimulate the release of pro-inflammatory cytokines and chemokines, further amplifying the immune response. C4a and C4b are the two subunits of C4, thus a functional binding ELISA assay was conducted to detect the interaction of recombinant human C4a and recombinant mouse C4b. Briefly, C4a was diluted serially in PBS with 0.01% BSA (pH 7.4). Duplicate samples of 100 µl were then transferred to C4b-coated microtiter wells and incubated for 1h at 37°C. Wells were washed with PBST and incubated for 1h with anti-C4a pAb, then aspirated and washed 3 times. After incubation with HRP labelled secondary antibody for 1h at</p>

 Tel: 1-631-559-9269 1-516-512-3133

 Email: info@creative-biomart.com  Fax: 1-631-938-8127

 45-1 Ramsey Road, Shirley, NY 11967, USA

37°C, wells were aspirated and washed 5 times. With the addition of substrate solution, wells were incubated 15-25 minutes at 37°C. Finally, add 50 μ stop solution to the wells and read at 450/630 nm immediately. The binding activity of recombinant human C4a and recombinant mouse C4b was shown, and this effect was in a dose dependent manner.

Molecular Mass 38.8kDa

Endotoxin <1.0EU per 1μg (determined by the LAL method).

Purity > 90% as determined by SDS-PAGE.

Storage Avoid repeated freeze/thaw cycles. Store at -20°C for 12 months. Aliquot and store at -80°C for 12 months.

Reconstitution Reconstitute in 10mM PBS (pH7.4) to a concentration of 0.1-1.0 mg/mL. Do not vortex.

GENE INFORMATION

Gene Name C4A complement component 4A (Rodgers blood group) [Homo sapiens]

Official Symbol C4A

Synonyms C4A; complement component 4A (Rodgers blood group); complement component 4A; complement C4-A; C4; C4A2; C4A3; C4A4; C4A6; C4B; C4S; CO4; CPAMD2; RG; acidic C4; C4A anaphylatoxin; Rodgers form of C4; acidic complement C4; C3 and PZP-like alpha-2-macroglobulin domain-containing protein 2; C4AD; MGC164979;

Gene ID 720

 Tel: 1-631-559-9269 1-516-512-3133

 Email: info@creative-biomart.com  Fax: 1-631-938-8127

 45-1 Ramsey Road, Shirley, NY 11967, USA

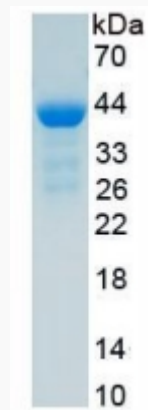
mRNA Refseq [NM_001252204](#)

Protein Refseq [NP_001239133](#)

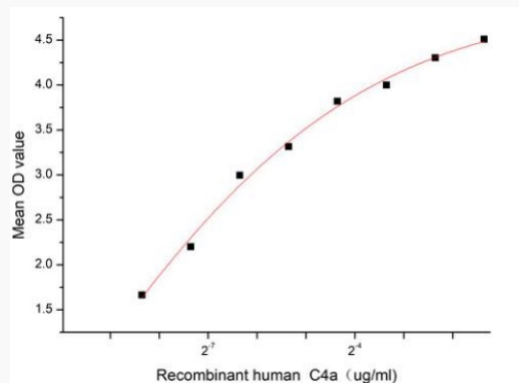
MIM [120810](#)

UniProt ID [P0C0L4](#)

SDS-PAGE



Activity



 Tel: 1-631-559-9269 1-516-512-3133

 Email: info@creative-biomart.com  Fax: 1-631-938-8127

 45-1 Ramsey Road, Shirley, NY 11967, USA