

Recombinant Human C4BPB Protein, MYC/DDK-tagged, C13 and N15-labeled

Cat. No. C4BPB-137H **Lot. No.** (See product label)

SPECIFICATION

Product Overview	C4BPB MS Standard C13 and N15-labeled recombinant protein (NP_001017365) with a C-terminal MYC/DDK tag, was expressed in HEK293 cells.
Species	Human
Source	HEK293
Description	<p>This gene encodes a member of a superfamily of proteins composed predominantly of tandemly arrayed short consensus repeats of approximately 60 amino acids. A single, unique beta-chain encoded by this gene assembles with seven identical alpha-chains into the predominant isoform of C4b-binding protein, a multimeric protein that controls activation of the complement cascade through the classical pathway. C4b-binding protein has a regulatory role in the coagulation system also, mediated through the beta-chain binding of protein S, a vitamin K-dependent protein that serves as a cofactor of activated protein C. The genes encoding both alpha and beta chains are located adjacent to each other on human chromosome 1 in the regulator of complement activation gene cluster. Alternative splicing gives rise to multiple transcript variants.</p>
Molecular Mass	28.3 kDa
AA Sequence	MFFWCACCLMVAWRVVSASDEHCPPELPPVDNSIFVAKEVEGQILGTYVCIKGYHLVG KKTLCNASKEWDNTTTECRLGHCPDVLVNGEFSSSGPVNVSDKITFMCNDHYILK

 Tel: 1-631-559-9269 1-516-512-3133

 Email: info@creative-biomart.com  Fax: 1-631-938-8127

 45-1 Ramsey Road, Shirley, NY 11967, USA

GSNRSQCLEDHTWAPPPICKSRDCDPPGNPVHGYFEGNNFTLGSTISYYCEDRYY
 LVGVQEQQCVDGEWSSALPVCKLIQEAPKPECEKALLAFQESKNLCEAMENFMQQ
 LKESGMTMEELKYSLELKKAEKAKLLTRTRPLEQKLISEEDLAANDILDYKDDDDKV

Purity > 80% as determined by SDS-PAGE and Coomassie blue staining

Stability Stable for 3 months from receipt of products under proper storage and handling conditions.

Storage Store at -80 centigrade. Avoid repeated freeze-thaw cycles.

Concentration 50 µg/mL as determined by BCA

Storage Buffer 100 mM glycine, 25 mM Tris-HCl, pH 7.3.

GENE INFORMATION

Gene Name C4BPB complement component 4 binding protein beta [Homo sapiens (human)]

Official Symbol C4BPB

Synonyms C4BPB; complement component 4 binding protein beta; C4BP

Gene ID 725

mRNA Refseq NM_001017365

Protein Refseq NP_001017365

MIM 120831

 Tel: 1-631-559-9269 1-516-512-3133

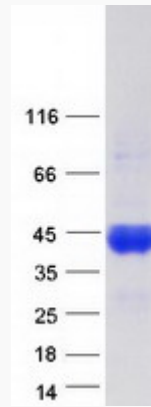
 Email: info@creative-biomart.com  Fax: 1-631-938-8127

 45-1 Ramsey Road, Shirley, NY 11967, USA

UniProt ID

P20851

SDS-PAGE



 Tel: 1-631-559-9269 1-516-512-3133

 Email: info@creative-biomart.com  Fax: 1-631-938-8127

 45-1 Ramsey Road, Shirley, NY 11967, USA