

Recombinant Full Length Human C4BPB Protein, C-Flag-tagged

Cat. No. C4BPB-1931HFL **Lot. No.** (See product label)

SPECIFICATION

Product Overview	Recombinant Full Length Human C4BPB Protein, fused to Flag-tag at C-terminus, was expressed in Mammalian cells.
Species	Human
Source	Mammalian Cells
Description	<p>This gene encodes a member of a superfamily of proteins composed predominantly of tandemly arrayed short consensus repeats of approximately 60 amino acids. A single, unique beta-chain encoded by this gene assembles with seven identical alpha-chains into the predominant isoform of C4b-binding protein, a multimeric protein that controls activation of the complement cascade through the classical pathway. C4b-binding protein has a regulatory role in the coagulation system also, mediated through the beta-chain binding of protein S, a vitamin K-dependent protein that serves as a cofactor of activated protein C. The genes encoding both alpha and beta chains are located adjacent to each other on human chromosome 1 in the regulator of complement activation gene cluster. Alternative splicing gives rise to multiple transcript variants.</p>
Form	25 mM Tris HCl, pH 7.3, 100 mM glycine, 10% glycerol.
Molecular Mass	26.2 kDa
AA Sequence	MFFWCACCLMVAWRVSASDEHCPPELPPVDNSIFVAKEVEGQILGTYVCIKGYHLVG

 Tel: 1-631-559-9269 1-516-512-3133

 Email: info@creative-biomart.com  Fax: 1-631-938-8127

 45-1 Ramsey Road, Shirley, NY 11967, USA

KKTLFCNASKEWDN TTTECRLGHCPDPVLVNGEFSSSGPVNVSDKITFMCNDHYIL
 KGSNRSQCLEDHTWAPFPICKSRDCDP PGNPVHGYFEGNNFTLGSTISYYCEDR
 YYLVGVQEQQCVDGEWSSALPVCKLIQEAPKPECEKALLAFQE SKNLCEAMENFM
 QQLKESGMTMEELKYSLELKKAELKAKLL TRTRPLEQKLISEEDLAANDILDYKDDD
 DKV

Purity > 80% as determined by SDS-PAGE and Coomassie blue staining.

Stability Stable for 12 months from the date of receipt of the product under proper storage and handling conditions. Avoid repeated freeze-thaw cycles.

Storage Store at -80 centigrade.

Concentration >50 ug/mL as determined by microplate BCA method.

Preparation Recombinant protein was captured through anti-DDK affinity column followed by conventional chromatography steps.

Protein Pathways Complement and coagulation cascades

Full Length Full L.

GENE INFORMATION

Gene Name C4BPB complement component 4 binding protein beta [Homo sapiens (human)]

Official Symbol C4BPB

Synonyms C4BP

Gene ID 725

 Tel: 1-631-559-9269 1-516-512-3133

 Email: info@creative-biomart.com  Fax: 1-631-938-8127

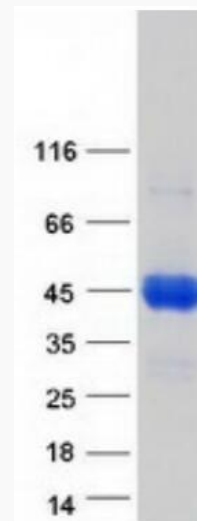
 45-1 Ramsey Road, Shirley, NY 11967, USA

mRNA Refseq [NM_000716.3](#)

Protein Refseq [NP_000707.1](#)

MIM [120831](#)

UniProt ID [P20851](#)



Coomassie blue staining of purified C4BPB protein.

 Tel: 1-631-559-9269 1-516-512-3133

 Email: info@creative-biomart.com  Fax: 1-631-938-8127

 45-1 Ramsey Road, Shirley, NY 11967, USA